

## Anti-SULT2A1 Antibody (1I505)

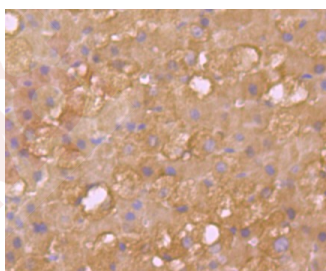
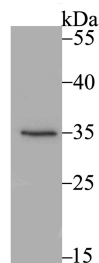
### Product Details

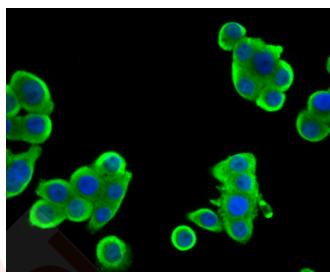
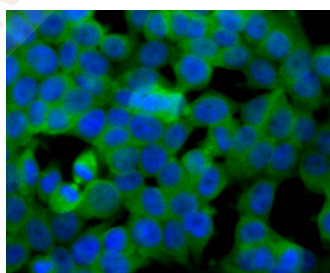
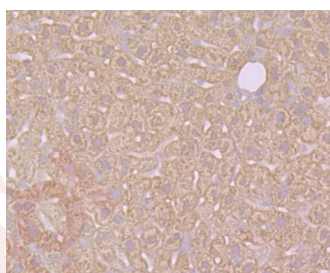
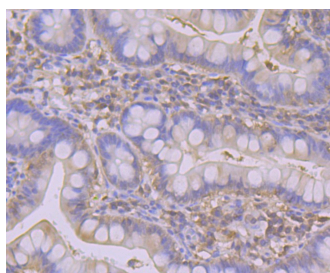
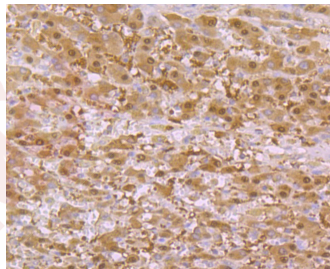
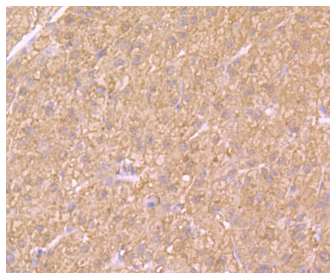
Ig Type:	IgG
Reactivity:	Human,Mouse,Rat
Conjugation:	Unconjugated
Molecular Weight:	Theoretical: 34 kDa.
Clone:	1I505
Purification:	ProA affinity purified

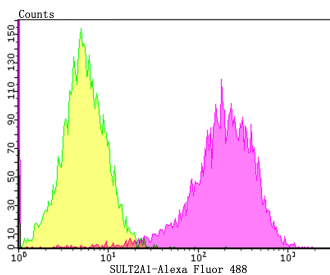
### Applications

1. Western blot analysis of SULT2A1 on mouse kidney tissue lysate using anti-SULT2A1 antibody at 1/1,000 dilution.
2. Immunohistochemical analysis of paraffin-embedded rat adrenal gland tissue using anti-SULT2A1 antibody. Counter stained with hematoxylin.
3. Immunohistochemical analysis of paraffin-embedded human liver tissue using anti-SULT2A1 antibody. Counter stained with hematoxylin.
4. Immunohistochemical analysis of paraffin-embedded human liver cancer tissue using anti-SULT2A1 antibody. Counter stained with hematoxylin.
5. Immunohistochemical analysis of paraffin-embedded human small intestine tissue using anti-SULT2A1 antibody. Counter stained with hematoxylin.
6. Immunohistochemical analysis of paraffin-embedded mouse liver tissue using anti-SULT2A1 antibody. Counter stained with hematoxylin.
7. ICC staining SULT2A1 in 293T cells (green). The nuclear counter stain is DAPI (blue). Cells were fixed in paraformaldehyde, permeabilised with 0.25% Triton X100/PBS.
8. ICC staining SULT2A1 in LOVO cells (green). The nuclear counter stain is DAPI (blue). Cells were fixed in paraformaldehyde, permeabilised with 0.25% Triton X100/PBS.
9. Flow cytometric analysis of HepG2 cells with SULT2A1 antibody at 1/100 dilution (yellow) compared with an unlabelled control (cells without incubation with primary antibody; purple). Alexa Fluor 488-conjugated goat anti-rabbit IgG was used as the secondary antibody.

Verified Activity:







Application: FCM,ICC,IF,IHC,WB

Recommended WB: 1:500-1000; IHC: 1:50-200; ICC: 1:500-2000; FCM: 1:50-100

### Properties

Stability & Storage: Store at -20°C or -80°C for 12 months. Avoid repeated freeze-thaw cycles.

Shipping: Shipping with blue ice.

### Antigen Details

Immunogen: Recombinant Protein: human SULT2A1 aa 100 to the C-terminus

Antigen Species: human

Uniprot ID: Q06520

Synonyms: ST2A1;HST;sulfotransferase family, cytosolic, 2A, dehydroepiandrosterone (DHEA)-preferring, member 1;ST2;DHEAS;ST2A3;STD;DHEA-ST;hSTa

### Research Background

The soluble sulfotransferases contribute to the elimination of xenobiotics, the activation of procarcinogens and the regulation of hormones. Members of the three groups comprising this superfamily show selectivity to certain substrate compounds. SULT1 sulfotransferases exhibit N-sulfating activities of carcinogenic heterocyclic amines, and are selective toward phenols, whereas SULT2 enzymes prefer hydroxysteroids and SULT3 family members are selective for N-substituted aryl and alicyclic compounds. SULT2A1 catalyzes the sulfonation of procarcinogen xenobiotics, hydroxysteroids and bile acids, and is highly expressed in adrenal and liver tissues. SULT2A1 plays a role in hepatic cholesterol homeostasis. SULT2B1 consists of two isoforms, SULT2B1a and SULT2B1b, which are transcribed from the same gene by alternative splicing of their first exons. Both isoforms are highly selective for the sulphation of 3 $\beta$ -hydroxysteroids such as pregnenolone, epiandrosterone, DHEA and androstenediol. SULT2B1b is expressed in prostate, skin, placenta and lung.

**Inhibitor · Natural Compounds · Compound Libraries · Recombinant Proteins**

This product is for Research Use Only · Not for Human or Veterinary or Therapeutic Use

Tel:781-999-4286 E\_mail:info@targetmol.com Address:34 Washington Street,Wellesley Hills,MA 02481