

Anti-Staufen Antibody (9G746)

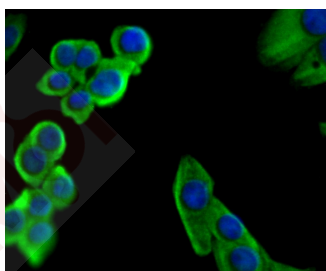
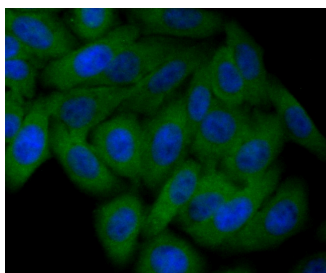
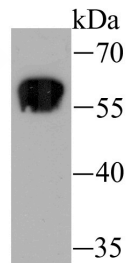
Product Details

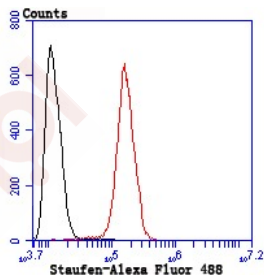
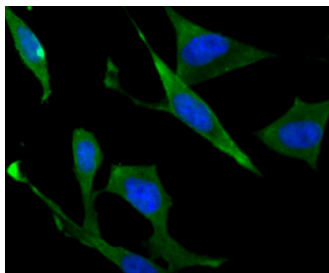
Ig Type:	IgG
Reactivity:	Human,Mouse,Rat
Conjugation:	Unconjugated
Molecular Weight:	Theoretical: 63 kDa.
Clone:	9G746
Purification:	ProA affinity purified

Applications

Verified Activity:

1. Western blot analysis of Staufen on K562 cell using anti-Staufen antibody at 1/1,000 dilution.
2. ICC staining Staufen in HepG2 cells (green). The nuclear counter stain is DAPI (blue). Cells were fixed in paraformaldehyde, permeabilised with 0.25% Triton X100/PBS.
3. ICC staining Staufen in LOVO cells (green). The nuclear counter stain is DAPI (blue). Cells were fixed in paraformaldehyde, permeabilised with 0.25% Triton X100/PBS.
4. ICC staining Staufen in SH-SY5Y cells (green). The nuclear counter stain is DAPI (blue). Cells were fixed in paraformaldehyde, permeabilised with 0.25% Triton X100/PBS.
5. Flow cytometric analysis of SH-SY5Y cells with Staufen antibody at 1/50 dilution (red) compared with an unlabelled control (cells without incubation with primary antibody; black). Alexa Fluor 488-conjugated goat anti rabbit IgG was used as the secondary antibody.





Application: FCM, ICC/IF, WB

Recommended WB: 1:500-2000; ICC/IF: 1:50-200; FCM: 1:50-100

Properties

Stability & Storage: Store at -20°C or -80°C for 12 months. Avoid repeated freeze-thaw cycles.

Shipping: Shipping with blue ice.

Antigen Details

Immunogen: Recombinant Protein

Uniprot ID: O95793

Staufen, RNA binding protein, homolog 1 (Drosophila);staufen-like;PPP1R150;Double stranded RNA binding protein Staufen homolog 1;Double-stranded RNA-binding protein Staufen

Synonyms: homolog 1;Double stranded RNA binding protein Staufen homolog;MGC124588; STAU1_HUMAN;STAU;STAU1;Staufen RNA binding protein (Drosophila);staufen;Staufen RNA binding protein homolog 1;Staufen, Drosophila, homolog of, 1;FLJ25010

Research Background

STAU1 (staufen, RNA binding protein, homolog 1) is a 577 amino acid protein that contains three double-stranded RNA-binding domains and is a mammalian homolog of Staufen, a Drosophila protein that is involved in mRNA transport during oogenesis and zygotic development. Localized to the rough endoplasmic reticulum (RER) and expressed in a variety of tissues, including heart, brain, liver, lung, pancreas, kidney and placenta, STAU1 binds to both Tubulin and double-stranded RNA and is thought to play an important role in mRNA transport from the microtubule network to the RER. Additionally, STAU1 may be involved in cross-linking cytoskeletal components with RNA, an event that is important for proper mRNA positioning during translation. Alternative splicing of the STAU1 gene yields two STAU1 isoforms, designated short and long.

Inhibitor · Natural Compounds · Compound Libraries · Recombinant Proteins

This product is for Research Use Only · Not for Human or Veterinary or Therapeutic Use

Tel: 781-999-4286 E_mail: info@targetmol.com Address: 34 Washington Street, Wellesley Hills, MA 02481