

## Anti-STAT5B Antibody (1Y166)

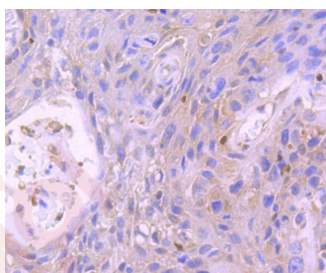
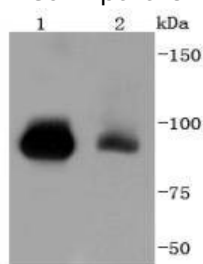
### Product Details

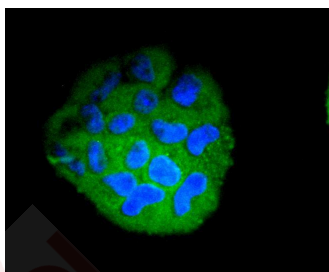
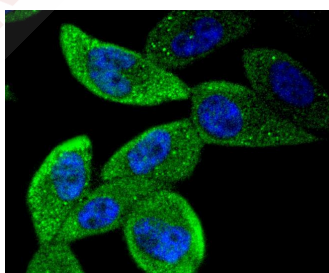
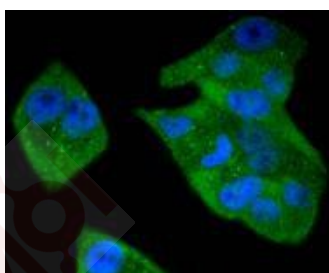
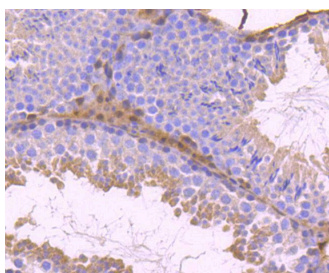
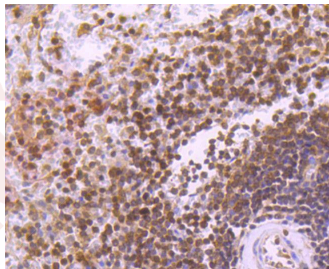
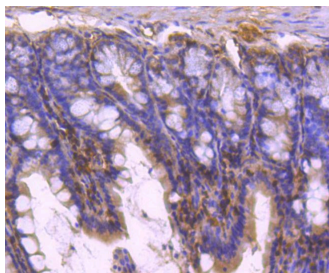
Ig Type:	IgG
Reactivity:	Human,Mouse,Rat
Conjugation:	Unconjugated
Molecular Weight:	Theoretical: 90 kDa.
Clone:	1Y166
Purification:	ProA affinity purified

### Applications

#### Verified Activity:

1. Western blot analysis of STAT5b on different lysates using anti-STAT5b antibody at 1/1,000 dilution. Positive control: Lane 1: K562, Lane 2: Hela.
2. Immunohistochemical analysis of paraffin-embedded human breast carcinoma tissue using anti-STAT5b antibody. Counter stained with hematoxylin.
3. Immunohistochemical analysis of paraffin-embedded mouse colon tissue using anti-STAT5b antibody. Counter stained with hematoxylin.
4. Immunohistochemical analysis of paraffin-embedded human spleen tissue using anti-STAT5b antibody. Counter stained with hematoxylin.
5. Immunohistochemical analysis of paraffin-embedded mouse testis tissue using anti-STAT5b antibody. Counter stained with hematoxylin.
6. ICC staining STAT5b in Hela cells (green). The nuclear counter stain is DAPI (blue). Cells were fixed in paraformaldehyde, permeabilised with 0.25% Triton X100/PBS.
7. ICC staining STAT5b in PC-3M cells (green). The nuclear counter stain is DAPI (blue). Cells were fixed in paraformaldehyde, permeabilised with 0.25% Triton X100/PBS.
8. ICC staining STAT5b in RH-35 cells (green). The nuclear counter stain is DAPI (blue). Cells were fixed in paraformaldehyde, permeabilised with 0.25% Triton X100/PBS.





Application: ICC/IF,IHC,IP,WB

Recommended WB: 1:1000-2000; IHC: 1:50-200; ICC/IF: 1:100-500

### Properties

Stability & Storage: Store at -20°C or -80°C for 12 months. Avoid repeated freeze-thaw cycles.

Shipping: Shipping with blue ice.

---

### Antigen Details

Immunogen: Recombinant Protein

Uniprot ID: P51692

Synonyms: STAT5B;Signal Transducer and Activator of Transcription 5B

---

### Research Background

Signal transducer and activator of transcription 5A (Stat5a) and Stat5b, which share 96% homology, undergo receptor tyrosine kinase or G protein-coupled receptor-dependent phosphorylation in response to cytokines or growth factors, and then form homo- or heterodimers that translocate to the nucleus, where they initiate transcription. Activation of Stat5a via IL-2, IL-3, IL-7/ GM-CSF, erythropoietin, thrombopoietin and growth hormones influences proliferation, differentiation and apoptosis in lymphohematopoietic cells. Phosphorylation of Stat5a at Ser127/Ser128 and Ser779 are contiguous on ErbB-4-mediated activation of Stat5a. Activation of Stat5b via IL-2, IL-4, CSF-1 and growth hormones influences TCR signaling, apoptosis, adult mammary gland development and sexual dimorphism of liver gene expression. Stat5b is the major liver-expressed Stat5 form that has been shown to fuse with the retinoid acid receptor gene in acute promyelocytic leukemias (APLL). Stat5a/b null mice have severely impaired lymphoid development and differentiation.

**Inhibitor · Natural Compounds · Compound Libraries · Recombinant Proteins**

This product is for Research Use Only · Not for Human or Veterinary or Therapeutic Use

Tel:781-999-4286 E\_mail:info@targetmol.com Address:34 Washington Street,Wellesley Hills,MA 02481

---