

Anti-SP1 Antibody (3K908)

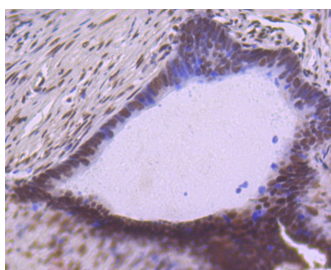
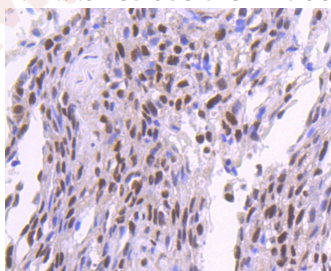
Product Details

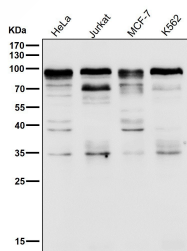
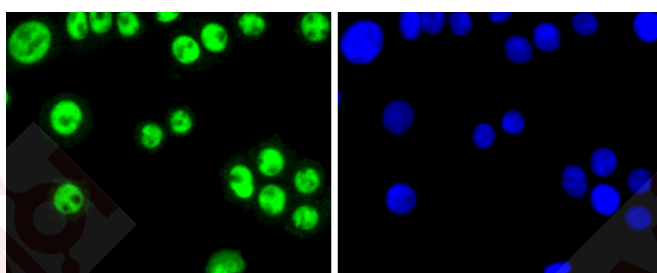
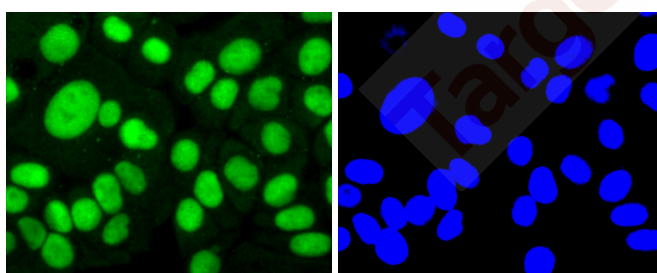
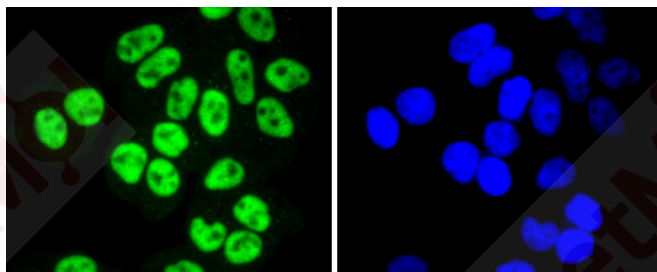
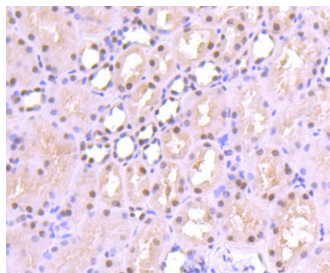
Ig Type:	IgG
Reactivity:	Human
Conjugation:	Unconjugated
Molecular Weight:	Theoretical: 81 kDa.
Clone:	3K908
Purification:	ProA affinity purified

Applications

Verified Activity:

1. Immunohistochemical analysis of paraffin-embedded human breast carcinoma tissue using anti-SP1 antibody. Counter stained with hematoxylin.
2. Immunohistochemical analysis of paraffin-embedded human colon cancer tissue using anti-SP1 antibody. Counter stained with hematoxylin.
3. Immunohistochemical analysis of paraffin-embedded human kidney tissue using anti-SP1 antibody. Counter stained with hematoxylin.
4. ICC staining SP1 in Hela cells (green). The nuclear counter stain is DAPI (blue). Cells were fixed in paraformaldehyde, permeabilised with 0.25% Triton X100/PBS.
5. ICC staining SP1 in MCF-7 cells (green). The nuclear counter stain is DAPI (blue). Cells were fixed in paraformaldehyde, permeabilised with 0.25% Triton X100/PBS.
6. ICC staining SP1 in SW480 cells (green). The nuclear counter stain is DAPI (blue). Cells were fixed in paraformaldehyde, permeabilised with 0.25% Triton X100/PBS.
7. All lanes use the Antibody at 1:1K dilution for 1 hour at room temperature.





Application: ICC/IF,IHC,WB

Recommended WB: 1:1000-2000; IHC: 1:50-200; ICC/IF: 1:100-500

Properties

Stability & Storage: Store at -20°C or -80°C for 12 months. Avoid repeated freeze-thaw cycles.

Shipping: Shipping with blue ice.

Antigen Details

Immunogen:	Recombinant Protein
Uniprot ID:	P08047
Synonyms:	Sp1 transcription factor isoform a;SP 1;Transcription factor Sp1;TSFP1;Specificity protein 1;TSFP1

Research Background

Sp1 is a sequence-specific transcription factor that recognizes GGGGCGGGC and closely related sequences, which are often referred to as GC boxes. Sp1 was initially identified as a HeLa cell-derived factor that selectively activates in vitro transcription from the SV40 promoter and binds to the multiple GC boxes in the 21-bp repeated elements in SV40. The sequence specificity of DNA binding is conferred by Zn (II) fingers, whereas a different region of Sp1 appears to regulate the affinity of DNA binding. Sp1 belongs to a subgroup of transcription factors that are phosphorylated upon binding to promoter sequences. Evidence suggests that the early growth response gene, Erg-1 (also known as Zif268 or NGF1-A), may downregulate certain mammalian gene promoters by competing with Sp1 for binding to an overlapping binding motif. The gene encoding human Sp1 maps to chromosome 12q13.1.

Inhibitor · Natural Compounds · Compound Libraries · Recombinant Proteins

This product is for Research Use Only · Not for Human or Veterinary or Therapeutic Use

Tel:781-999-4286 E_mail:info@targetmol.com Address:34 Washington Street,Wellesley Hills,MA 02481