

Anti-Phospho-ATP1A1 (Tyr260) Polyclonal Antibody

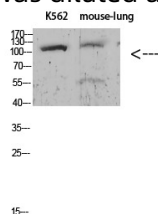
Product Details

Ig Type:	IgG
Reactivity:	Human,Mouse,Rat
Conjugation:	Unconjugated
Molecular Weight:	Theoretical: 115 kDa.
Purification:	The antibody was affinity-purified from rabbit serum by affinity-chromatography using specific immunogen.

Applications

Verified Activity:

1. Western blot analysis of KB Hela lysate, antibody was diluted at 1000. Secondary antibody was diluted at 1:20000.



Application:	WB
Recommended	WB: 1:500-2000

Properties

Stability & Storage:	Store at -20°C or -80°C for 12 months. Avoid repeated freeze-thaw cycles.
Shipping:	Shipping with blue ice.

Antigen Details

Immunogen:	A synthesized peptide: human protein at AA range: 230-290
Antigen Species:	human
Uniprot ID:	P05023
Synonyms:	ATP1A1 (p-Tyr260);ATP1A1 (p-Y260);p-ATP1A1 (Y260);p-ATP1A1 (Tyr260)

Inhibitor · Natural Compounds · Compound Libraries · Recombinant Proteins

This product is for Research Use Only · Not for Human or Veterinary or Therapeutic Use

Tel:781-999-4286 E_mail:info@targetmol.com Address:34 Washington Street,Wellesley Hills,MA 02481