

## Anti-SOCS2 Antibody (9S693)

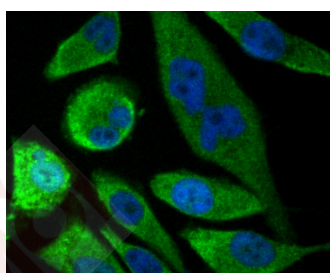
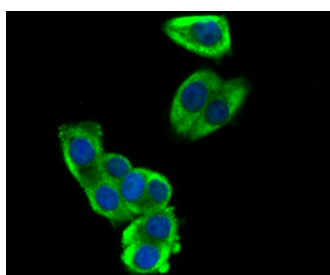
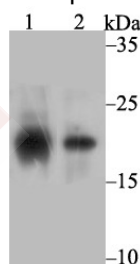
### Product Details

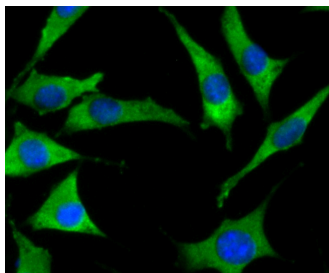
Ig Type:	IgG
Reactivity:	Human
Conjugation:	Unconjugated
Molecular Weight:	Theoretical: 22 kDa.
Clone:	9S693
Purification:	ProA affinity purified

### Applications

#### Verified Activity:

1. Western blot analysis of SOCS2 on different lysates using anti-SOCS2 antibody at 1/1,000 dilution. Positive control: Lane 1: Human placenta Lane 2: SH-SY-5Y
2. ICC staining SOCS2 in LOVO cells (green). The nuclear counter stain is DAPI (blue). Cells were fixed in paraformaldehyde, permeabilised with 0.25% Triton X100/PBS.
3. ICC staining SOCS2 in PC-3M cells (green). The nuclear counter stain is DAPI (blue). Cells were fixed in paraformaldehyde, permeabilised with 0.25% Triton X100/PBS.
4. ICC staining SOCS2 in SH-SY-5Y cells (green). The nuclear counter stain is DAPI (blue). Cells were fixed in paraformaldehyde, permeabilised with 0.25% Triton X100/PBS.





Application: ICC,IF,IP,WB

Recommended WB: 1:500-2000; ICC: 1:50-200; IP: 1:10-50

### Properties

Stability & Storage: Store at -20°C or -80°C for 12 months. Avoid repeated freeze-thaw cycles.

Shipping: Shipping with blue ice.

### Antigen Details

Immunogen: Recombinant Protein: human SOCS2 1-150aa

Antigen Species: human

Uniprot ID: O14508

Synonyms: SSI2;SOCS 2;SSI 2;CIS 2;STAT induced STAT inhibitor 2;Socs2;Cish 2;SSI-2;CIS2;SOCS-2; Cytokine-inducible SH2 protein 2;CIS-2;Cish2;Cytokine inducible SH2 protein 2;STAT-induced STAT inhibitor 2;STATI2;SOCS2\_HUMAN;Suppressor of cytokine signaling 2;STATI 2

### Research Background

SOCS family proteins form part of a classical negative feedback system that regulates cytokine signal transduction. SOCS2 appears to be a negative regulator in the growth hormone/IGF1 signaling pathway. Probable substrate recognition component of a SCF-like ECS (Elongin BC-CUL2/5-SOCS-box protein) E3 ubiquitin-protein ligase complex which mediates the ubiquitination and subsequent proteasomal degradation of target proteins.

**Inhibitor · Natural Compounds · Compound Libraries · Recombinant Proteins**

This product is for Research Use Only · Not for Human or Veterinary or Therapeutic Use

Tel:781-999-4286 E\_mail:info@targetmol.com Address:34 Washington Street,Wellesley Hills,MA 02481