

Anti-SNAP-25 Antibody (9N996)

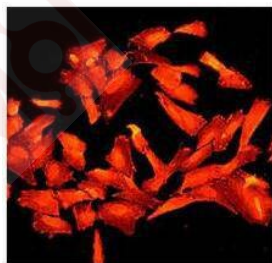
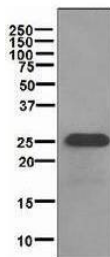
Product Details

Ig Type:	IgG
Reactivity:	Human,Mouse,Rat
Conjugation:	Unconjugated
Molecular Weight:	Theoretical: 23 kDa.
Clone:	9N996
Purification:	Protein A purified

Applications

Verified Activity:

1. Western blot analysis on SH-SY-5Y cells lysate using anti-SNAP-25.
2. Immunofluorescent staining of SNAP25 in SH-SY-5Y cells using anti-SNAP-25.



Application:

ICC/IF,IP,WB

Recommended

WB: 1:1000; ICC/IF: 1:100; IP: 1:10-100

Properties

Stability & Storage: Store at -20°C or -80°C for 12 months. Avoid repeated freeze-thaw cycles.

Shipping: Shipping with blue ice.

Antigen Details

Immunogen:	Peptide
Uniprot ID:	P60880
Synonyms:	dj1068F16.2;SNAP;SEC9;bA416N4.2;RIC-4;RIC4;SNAP-25;synaptosomal-associated protein, 25kDa

Research Background

Syntaxins were originally thought to be docking proteins, but have now been categorized as anchoring proteins that anchor themselves to the cytoplasmic surfaces of cellular membranes. Syntaxins have been shown to bind to various proteins involved in exocytosis, including VAMPs (vesicle-associated membrane proteins), NSF (N-ethylmaleimide-sensitive factor), SNAP 25, SNAPs (soluble NSF attachment proteins) and synaptotagmin. VAMPs, also designated synaptobrevins, including VAMP-1 and VAMP-2, and synaptotagmin, a protein that may function as an inhibitor of exocytosis, are vesicular proteins. SNAPs, including α - and γ -SNAP, are cytoplasmic proteins that bind to a membrane receptor complex composed of VAMP, SNAP 25 and syntaxin. SNAPs mediate the membrane binding of NSF, which is essential for membrane fusion reactions. An additional protein designated synaptophysin may regulate exocytosis by competing with SNAP 25 and syntaxins for VAMP binding.

Inhibitor · Natural Compounds · Compound Libraries · Recombinant Proteins

This product is for Research Use Only · Not for Human or Veterinary or Therapeutic Use

Tel:781-999-4286 E_mail:info@targetmol.com Address:34 Washington Street,Wellesley Hills,MA 02481