

Anti-SMYD3 Antibody (2M615)

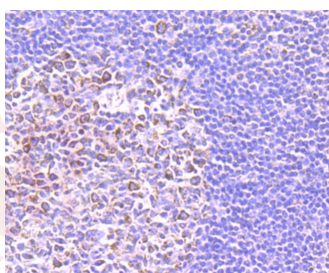
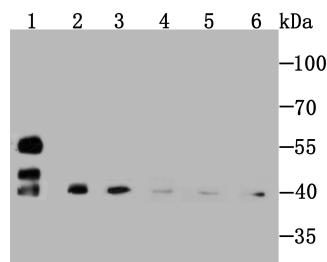
Product Details

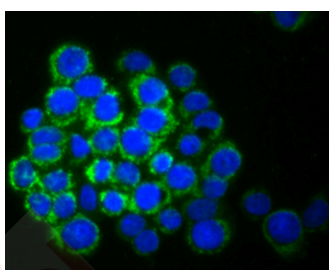
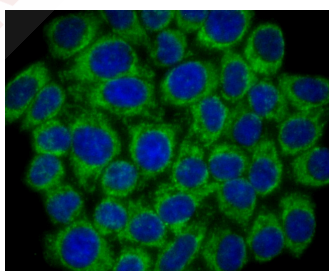
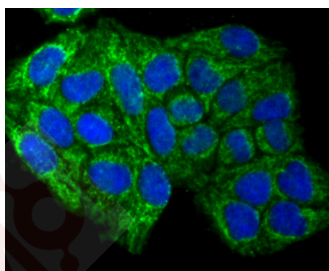
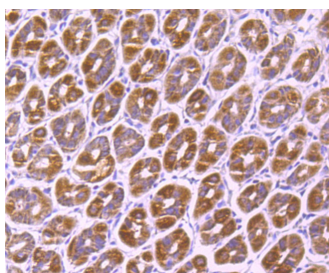
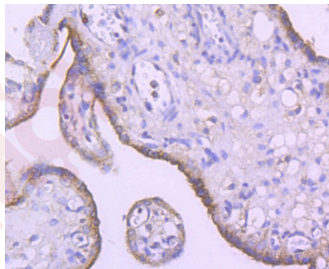
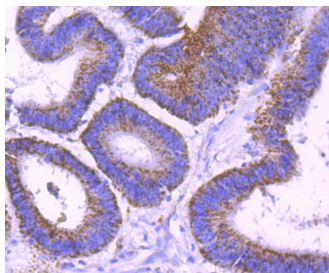
Ig Type:	IgG
Reactivity:	Human,Mouse,Rat
Conjugation:	Unconjugated
Clone:	2M615
Purification:	ProA affinity purified

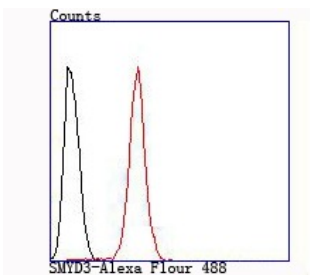
Applications

1. Western blot analysis of SMYD3 on different cell/tissue lysate using anti-Profilin 1 antibody at 1/1,000 dilution. Positive control: Lane1: Rat kidney, Lane2: PC-12, Lane3: Hela, Lane4: Mouse spleen, Lane5: NIH-3T3, Lane6: Rat spleen.
2. Immunohistochemical analysis of paraffin-embedded human tonsil tissue using anti-SMYD3 antibody. Counter stained with hematoxylin.
3. Immunohistochemical analysis of paraffin-embedded human colon cancer tissue using anti-SMYD3 antibody. Counter stained with hematoxylin.
4. Immunohistochemical analysis of paraffin-embedded human placenta tissue using anti-SMYD3 antibody. Counter stained with hematoxylin.
5. Immunohistochemical analysis of paraffin-embedded mouse stomach tissue using anti-SMYD3 antibody. Counter stained with hematoxylin.
6. ICC staining SMYD3 in Hela cells (green). The nuclear counter stain is DAPI (blue). Cells were fixed in paraformaldehyde, permeabilised with 0.25% Triton X100/PBS.
7. ICC staining SMYD3 in HepG2 cells (green). The nuclear counter stain is DAPI (blue). Cells were fixed in paraformaldehyde, permeabilised with 0.25% Triton X100/PBS.
8. ICC staining SMYD3 in LOVO cells (green). The nuclear counter stain is DAPI (blue). Cells were fixed in paraformaldehyde, permeabilised with 0.25% Triton X100/PBS.
9. Flow cytometric analysis of Hela cells with SMYD3 antibody at 1/100 dilution (red) compared with an unlabelled control (cells without incubation with primary antibody; black).

Verified Activity:







Application: FCM,ICC/IF,IHC,IP,WB

Recommended WB: 1:500-2000; IHC: 1:50-200; ICC/IF: 1:50-200; FCM: 1:50-100

Properties

Stability & Storage: Store at -20°C or -80°C for 12 months. Avoid repeated freeze-thaw cycles.

Shipping: Shipping with blue ice.

Antigen Details

Immunogen: Recombinant Protein

Uniprot ID: Q9H7B4

Synonyms: KMT3E;ZNFN3A1;bA74P14.1;ZMYND1;SET and MYND domain containing 3

Research Background

Belongs to the histone-lysine methyltransferase family. Contains 1 MYND-type zinc finger. Contains 1 SET domain. Histones methyltransferase. Methylates 'Lys-4' of histone H3, inducing di- and tri-methylation, but not monomethylation. Plays an important role in transcriptional activation as a member of an RNA polymerase complex. Binds DNA containing 5'-CCCTCC-3' or 5'-GAGGGG-3'.

Inhibitor · Natural Compounds · Compound Libraries · Recombinant Proteins

This product is for Research Use Only · Not for Human or Veterinary or Therapeutic Use

Tel:781-999-4286 E_mail:info@targetmol.com Address:34 Washington Street,Wellesley Hills,MA 02481