

Anti-SMCP Antibody (3I511)

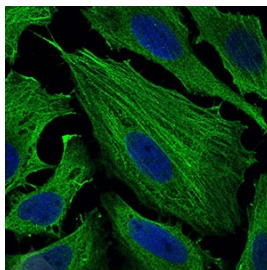
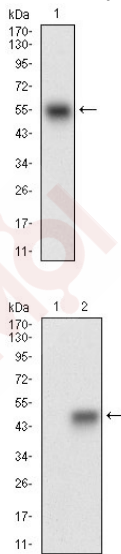
Product Details

Reactivity:	Human
Conjugation:	Unconjugated
Molecular Weight:	Theoretical: 13 kDa.
Clone:	3I511
Purification:	ProA affinity purified

Applications

Verified Activity:

1. Western blot analysis of SMCP on human SMCP recombinant protein using anti-SMCP antibody at 1/1,000 dilution.
2. Western blot analysis of SMCP on HEK293 (1) and SMCP-hlgGfC transfected HEK293 (2) cell lysate using anti-SMCP antibody at 1/1,000 dilution.
3. ICC staining SMCP (green) in Hela cells. The nuclear counter stain is DAPI (blue). Cells were fixed in paraformaldehyde, permeabilised with 0.25% Triton X100/PBS.



Application:	ICC,WB
Recommended	WB: 1:500-2000; ICC: 1:50-200

Properties

Stability & Storage: Store at -20°C or -80°C for 12 months. Avoid repeated freeze-thaw cycles.

Shipping: Shipping with blue ice.

Antigen Details

Immunogen: Recombinant Protein

Uniprot ID: P49901

Synonyms: MCS;HSMCSGEN1;SMCP;Sperm mitochondria associated cysteine rich protein;MCSP;MCSP_HUMAN;Mitochondrial capsule selenoprotein;Sperm mitochondrial-associated cysteine-rich protein

Research Background

Sperm mitochondria differ in morphology and subcellular localization from those of somatic cells. They are elongated, flattened, and arranged circumferentially to form a helical coiled sheath in the midpiece of the sperm flagellum. The protein encoded by this gene localizes to the capsule associated with the mitochondrial outer membranes and is thought to function in the organization and stabilization of the helical structure of the sperm's mitochondrial sheath.

Inhibitor · Natural Compounds · Compound Libraries · Recombinant Proteins

This product is for Research Use Only · Not for Human or Veterinary or Therapeutic Use

Tel:781-999-4286 E_mail:info@targetmol.com Address:34 Washington Street,Wellesley Hills,MA 02481