

Anti-SMC3 Antibody (2D413)

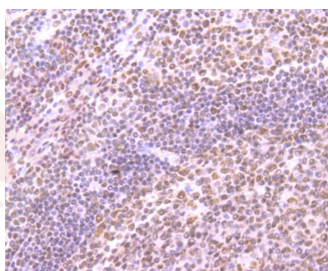
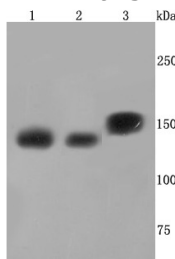
Product Details

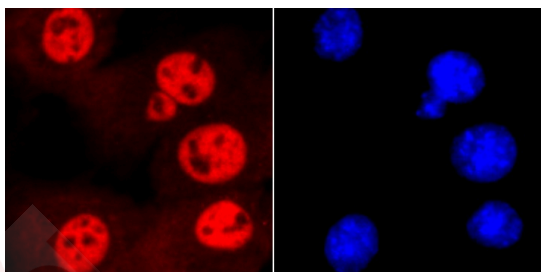
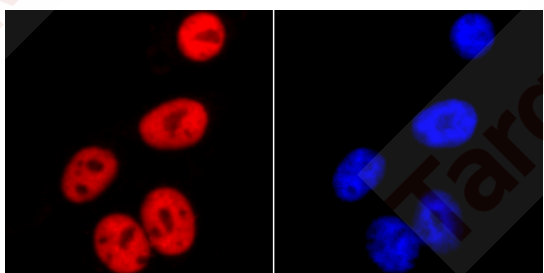
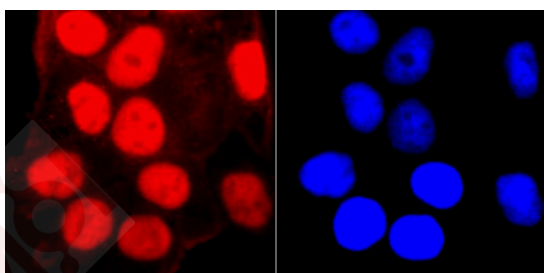
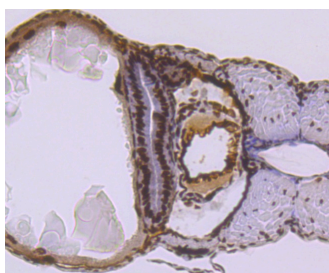
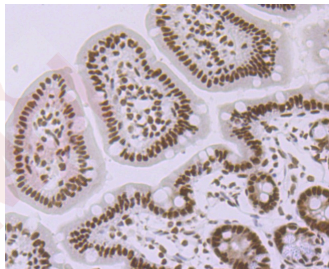
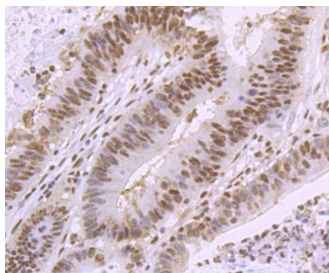
Ig Type:	IgG
Reactivity:	Human,Mouse,Rat
Conjugation:	Unconjugated
Molecular Weight:	Theoretical: 141 kDa.
Clone:	2D413
Purification:	ProA affinity purified

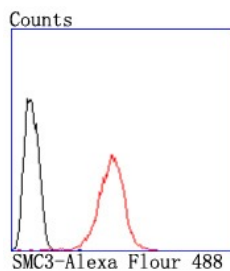
Applications

1. Western blot analysis of SMC3 on different cells lysates using anti-SMC3 antibody at 1/1,000 dilution. Positive control: Line1: HepG2, Line2: NIH-3T3, Line3:PC12.
2. Immunohistochemical analysis of paraffin-embedded human tonsil tissue using anti-SMC3 antibody. Counter stained with hematoxylin.
3. Immunohistochemical analysis of paraffin-embedded human colon cancer tissue using anti-SMC3 antibody. Counter stained with hematoxylin.
4. Immunohistochemical analysis of paraffin-embedded mouse colon tissue using anti-SMC3 antibody. Counter stained with hematoxylin.
5. Immunohistochemical analysis of paraffin-embedded zebrafish tissue using anti-SMC3 antibody. Counter stained with hematoxylin.
6. ICC staining SMC3 in Hela cells (red). The nuclear counter stain is DAPI (blue). Cells were fixed in paraformaldehyde, permeabilised with 0.25% Triton X100/PBS.
7. ICC staining SMC3 in HepG2 cells (red). The nuclear counter stain is DAPI (blue). Cells were fixed in paraformaldehyde, permeabilised with 0.25% Triton X100/PBS.
8. ICC staining SMC3 in NIH-3T3 cells (red). The nuclear counter stain is DAPI (blue). Cells were fixed in paraformaldehyde, permeabilised with 0.25% Triton X100/PBS.
9. Flow cytometric analysis of Hela cells with SMC3 antibody at 1/50 dilution (red) compared with an unlabelled control (cells without incubation with primary antibody; black). Alexa Fluor 488-conjugated goat anti rabbit IgG was used as the secondary antibody.

Verified Activity:







Application: FCM,ICC/IF,IHC,WB

Recommended WB: 1:1000-5000; IHC: 1:50-200; ICC/IF: 1:100-500; FCM: 1:50-100

Properties

Stability & Storage: Store at -20°C or -80°C for 12 months. Avoid repeated freeze-thaw cycles.

Shipping: Shipping with blue ice.

Antigen Details

Immunogen: Recombinant Protein

Uniprot ID: Q9UQE7

Chondroitin sulfate proteoglycan 6;chondroitin sulfate proteoglycan 6 (bamacan); Chromosome-associated polypeptide;Human chromosome associated polypeptide;SMC protein 3;u:fb22e01;Structural maintenance of chromosomes protein 3;BAM;CSPG6;im:

Synonyms: 7142991;Chromosome associated polypeptide;SMC 3;Basement membrane-associated chondroitin proteoglycan;SMC-3;hCAP;SMC3L1;CDLS3;Structural maintenance of chromosomes 3;SMC3_HUMAN;BMH;Bamacan;Basement membrane associated chondroitin proteoglycan; wu:fc30d07;Structural maintenance of chromosome 3;CSPG 6

Research Background

The SMC (structural maintenance of chromosomes) family of proteins form heterodimeric complexes that modulate sister chromatid cohesion and chromosome condensation for mitosis. The two distinct classes of SMC protein complexes are comprised of SMC1 (also designated SB1.8) with SMC3 (also designated HCAP for human chromosome-associated protein and Bamacan for the secreted proteoglycan), and SMC2 (also designated hCAP-E) with SMC4 (also designated hCAP-C). The SMC1/SMC3 complex is required for metaphase progression in mitotic cells and functions independently of the SMC2/SMC4 complex during the cell cycle. SMC1 is ubiquitously expressed in various human tissues, including thymus, testis, and colon. SMC3 is expressed as a nuclear protein in the colon, but can also occur as a secreted proteoglycan expressed in testis and brain. The secreted proteoglycan contains several glycosylation sites and is thought to play a role in basement membrane physiology.

Inhibitor · Natural Compounds · Compound Libraries · Recombinant Proteins

This product is for Research Use Only · Not for Human or Veterinary or Therapeutic Use

Tel:781-999-4286 E_mail:info@targetmol.com Address:34 Washington Street,Wellesley Hills,MA 02481