

Anti-SMC1A Antibody (7H408)

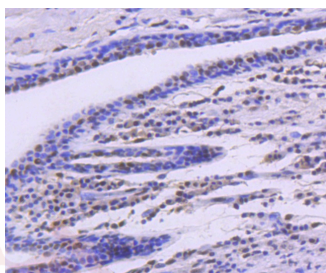
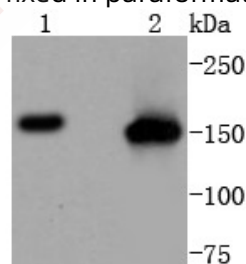
Product Details

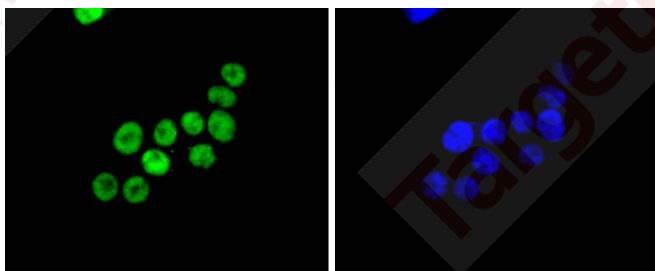
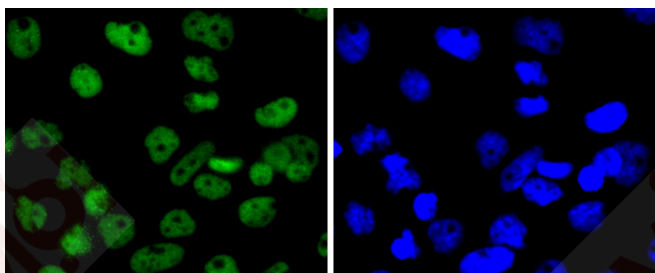
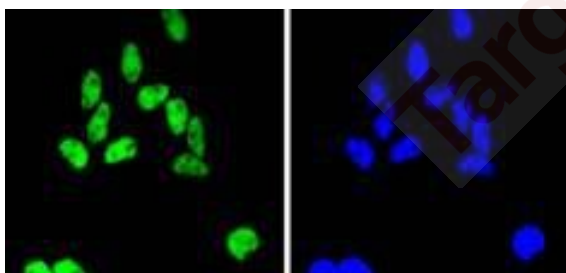
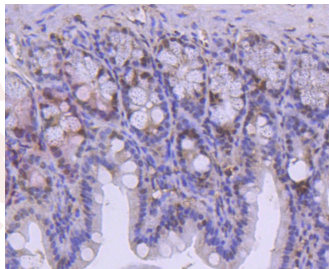
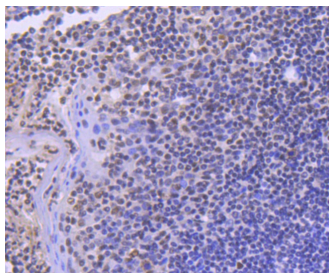
| | |
|-------------------|------------------------|
| Ig Type: | IgG |
| Reactivity: | Human,Mouse,Rat |
| Conjugation: | Unconjugated |
| Molecular Weight: | Theoretical: 143 kDa. |
| Clone: | 7H408 |
| Purification: | ProA affinity purified |

Applications

Verified Activity:

1. Western blot analysis of SMC1 on different lysates using anti-SMC1 antibody at 1/1,000 dilution. Positive control: Lane 1: NIH/3T3, Lane 2: Hela.
2. Immunohistochemical analysis of paraffin-embedded human breast carcinoma tissue using anti-SMC1 antibody. Counter stained with hematoxylin.
3. Immunohistochemical analysis of paraffin-embedded human tonsil tissue using anti-SMC1 antibody. Counter stained with hematoxylin.
4. Immunohistochemical analysis of paraffin-embedded mouse colon tissue using anti-SMC1 antibody. Counter stained with hematoxylin.
5. ICC staining SMC1 in Hela cells (green). The nuclear counter stain is DAPI (blue). Cells were fixed in paraformaldehyde, permeabilised with 0.25% Triton X100/PBS.
6. ICC staining SMC1 in A431 cells (green). The nuclear counter stain is DAPI (blue). Cells were fixed in paraformaldehyde, permeabilised with 0.25% Triton X100/PBS.
7. ICC staining SMC1 in SW480 cells (green). The nuclear counter stain is DAPI (blue). Cells were fixed in paraformaldehyde, permeabilised with 0.25% Triton X100/PBS.





Application: ICC/IF,IHC,WB

Recommended WB: 1:1000-2000; IHC: 1:50-200; ICC/IF: 1:100-500

Properties

Stability & Storage: Store at -20°C or -80°C for 12 months. Avoid repeated freeze-thaw cycles.

Shipping: Shipping with blue ice.

Antigen Details

Immunogen: Recombinant Protein
Uniprot ID: Q14683
Synonyms: SMC1L1;SMC-1A;Structural maintenance of chromosomes protein 1A;SMC1;KIAA0178;SMC protein 1A;Sb1.8;DXS423E;SMC-1-alpha

Research Background

The SMC (structural maintenance of chromosomes) family of proteins form heterodimeric complexes that modulate sister chromatid cohesion and chromosome condensation for mitosis. SMC1 α (structural maintenance of chromosomes protein 1A), also known as SMC1, SMCB, CDLS2, SB1.8, SMC1L1 or DXS423E, is a 1,233 amino acid nuclear protein that is involved in chromosome cohesion during the cell cycle. SMC1 α interacts with BRCA1 and is phosphorylated by ATM, indicating a potential role in DNA repair. SMC1 α is a component of the cohesion complex, which is required for the cohesion of sister chromatids after DNA replication. Mutations in the gene encoding SMC1 α may be the cause of Cornelia de Lange syndrome (CdLS), which is a clinically heterogeneous developmental disorder characterized by facial dysmorphism, upper limb malformations, growth and cognitive retardation.

Inhibitor · Natural Compounds · Compound Libraries · Recombinant Proteins

This product is for Research Use Only · Not for Human or Veterinary or Therapeutic Use

Tel:781-999-4286 E_mail:info@targetmol.com Address:34 Washington Street,Wellesley Hills,MA 02481