

## Anti-SMARCC1 Antibody (6J524)

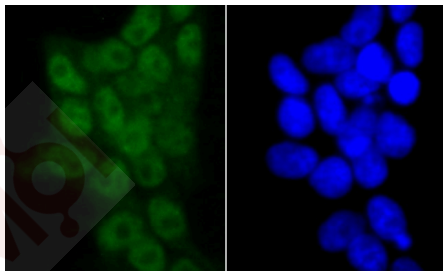
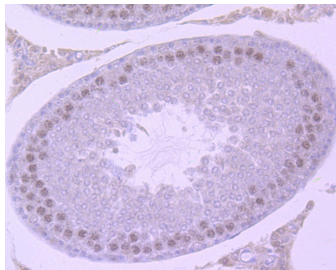
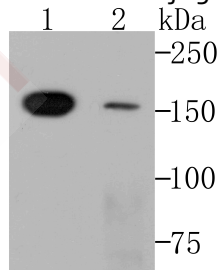
### Product Details

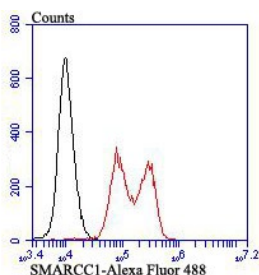
Ig Type:	IgG
Reactivity:	Human,Rat
Conjugation:	Unconjugated
Molecular Weight:	Theoretical: 123 (Observed: 150) kDa.
Clone:	6J524
Purification:	ProA affinity purified

### Applications

#### Verified Activity:

1. Western blot analysis of SMARCC1 on different cell lysates using anti-SMARCC1 at 1/500 dilution. Positive control: Line 1: Mouse thymus tissue, Line 2: HL-60.
2. Immunohistochemical analysis of paraffin-embedded mouse testis tissue using anti-SMARCC1 antibody. Counter stained with hematoxylin.
3. ICC staining SMARCC1 in 293T cells (green). The nuclear counter stain is DAPI (blue). Cells were fixed in paraformaldehyde, permeabilised with 0.25% Triton X100/PBS.
4. Flow cytometric analysis of K562 cells with SMARCC1 antibody at 1/50 dilution (red) compared with an unlabelled control (cells without incubation with primary antibody; black). Alexa Fluor 488-conjugated goat anti-rabbit IgG was used as the secondary antibody.





Application: FCM,ICC,IF,IP,WB

Recommended WB: 1:500-1000; ICC: 1:50-200; IP: 1:10-50; FCM: 1:50-100

---

### Properties

Stability & Storage: Store at -20°C or -80°C for 12 months. Avoid repeated freeze-thaw cycles.

Shipping: Shipping with blue ice.

---

### Antigen Details

Immunogen: Recombinant Protein

Uniprot ID: Q92922

Synonyms: SWI/SNF-related matrix-associated actin-dependent regulator of chromatin subfamily C member 1; SMARCC1; BAF155; SWI/SNF complex 155 kDa subunit; SWI/SNF complex subunit SMARCC1; BRG1-associated factor 155 (BAF155)

---

### Research Background

Involved in transcriptional activation and repression of select genes by chromatin remodeling (alteration of DNA-nucleosome topology). Component of SWI/SNF chromatin remodeling complexes that carry out key enzymatic activities, changing chromatin structure by altering DNA-histone contacts within a nucleosome in an ATP-dependent manner. May stimulate the ATPase activity of the catalytic subunit of the complex. Belongs to the neural progenitors-specific chromatin remodeling complex (npBAF complex) and the neuron-specific chromatin remodeling complex (nBAF complex). During neural development a switch from a stem/progenitor to a postmitotic chromatin remodeling mechanism occurs as neurons exit the cell cycle and become committed to their adult state. The transition from proliferating neural stem/progenitor cells to postmitotic neurons requires a switch in subunit composition of the npBAF and nBAF complexes.

**Inhibitor · Natural Compounds · Compound Libraries · Recombinant Proteins**

This product is for Research Use Only · Not for Human or Veterinary or Therapeutic Use

Tel: 781-999-4286 E\_mail: info@targetmol.com Address: 34 Washington Street, Wellesley Hills, MA 02481

---