

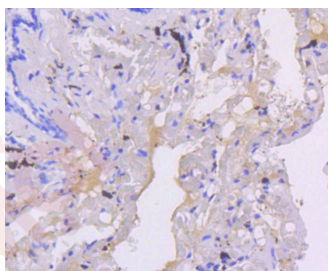
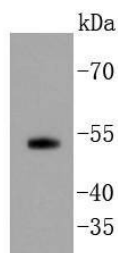
## Anti-SMAD5 Antibody (9J928)

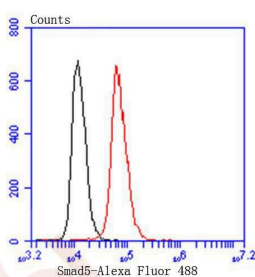
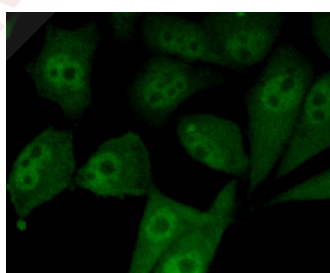
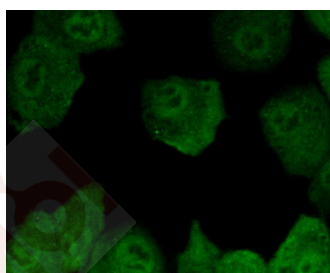
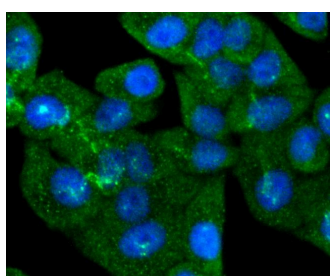
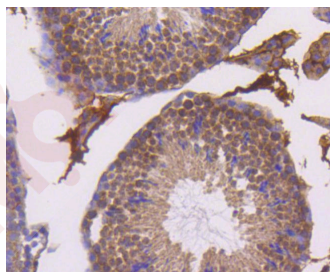
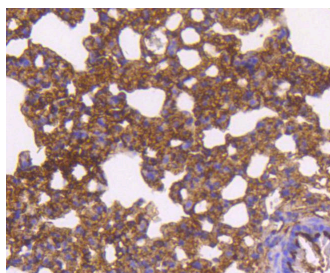
### Product Details

Ig Type:	IgG
Reactivity:	Human,Rat
Conjugation:	Unconjugated
Molecular Weight:	Theoretical: 52 kDa.
Clone:	9J928
Purification:	ProA affinity purified

### Applications

1. Western blot analysis of Smad5 on PC-3M cell lysates using anti-Smad5 antibody at 1/1,000 dilution.
  2. Immunohistochemical analysis of paraffin-embedded human lung tissue using anti-Smad5 antibody. Counter stained with hematoxylin.
  3. Immunohistochemical analysis of paraffin-embedded mouse lung tissue using anti-Smad5 antibody. Counter stained with hematoxylin.
  4. Immunohistochemical analysis of paraffin-embedded mouse testis tissue using anti-Smad5 antibody. Counter stained with hematoxylin.
- Verified Activity:
5. ICC staining Smad5 in Hela cells (green). The nuclear counter stain is DAPI (blue). Cells were fixed in paraformaldehyde, permeabilised with 0.25% Triton X100/PBS.
  6. ICC staining Smad5 in A549 cells (green). Cells were fixed in paraformaldehyde, permeabilised with 0.25% Triton X100/PBS.
  7. ICC staining Smad5 in PC-3M cells (green). Cells were fixed in paraformaldehyde, permeabilised with 0.25% Triton X100/PBS.
  8. Flow cytometric analysis of Hela cells with Smad5 antibody at 1/50 dilution (red) compared with an unlabelled control (cells without incubation with primary antibody; black). Alexa Fluor 488-conjugated goat anti rabbit IgG was used as the secondary antibody.





Application: FCM, ICC, IHC, WB

Recommended WB: 1:1000-2000; IHC: 1:50-200; ICC: 1:50-200; FCM: 1:50-100

### Properties

Stability & Storage: Store at -20°C or -80°C for 12 months. Avoid repeated freeze-thaw cycles.

Shipping: Shipping with blue ice.

---

### Antigen Details

Immunogen: Recombinant Protein

Uniprot ID: Q99717

Synonyms: mothers against DPP homolog 5;hSmad5;MusMLP;JV5 1;MADH 5;SMAD;Dwfc;DKFZp781O1323; SMA and MAD related protein 5;DKFZp781C1895;MAD homolog 5;mothers against decapentaplegic homolog 5;SMAD family member 5;MADH5;SMAD 5;MAD

---

### Research Background

Smad proteins, the mammalian homologs of the *Drosophila* Mothers against dpp (Mad) have been implicated as downstream effectors of TGF $\beta$ /BMP signaling. Smad1 (also designated Madr1 or JV4-1), Smad5 and mammalian Smad8 (also designated Smad9 or MADH6) are effectors of BMP2 and BMP4 function while Smad2 (also designated Madr2 or JV18-1) and Smad3 are involved in TGF $\beta$  and activin-mediated growth modulation. Smad4 (also designated DPC4) has been shown to mediate all of the above activities through interaction with various Smad family members. Smad6 and Smad7 regulate the response to activin/TGF $\beta$  signaling by interfering with TGF $\beta$ -mediated phosphorylation of other Smad family members.

**Inhibitor · Natural Compounds · Compound Libraries · Recombinant Proteins**

This product is for Research Use Only · Not for Human or Veterinary or Therapeutic Use

Tel:781-999-4286 E\_mail:info@targetmol.com Address:34 Washington Street,Wellesley Hills,MA 02481