

## Anti-SMAD2 Antibody (4E423)

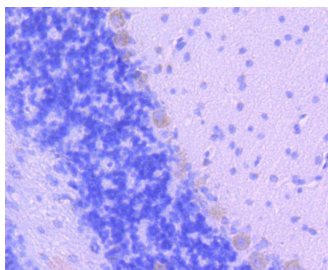
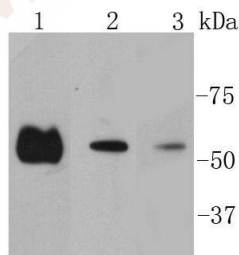
### Product Details

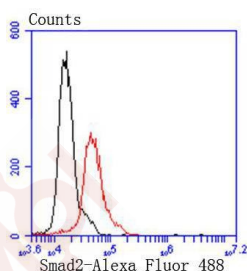
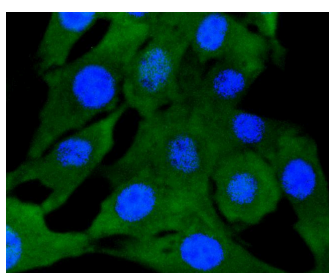
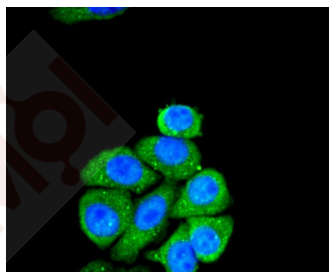
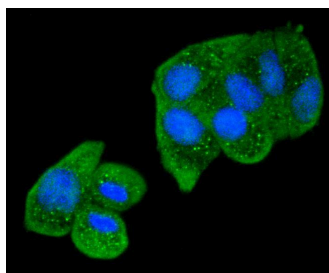
Ig Type:	IgG
Reactivity:	Human,Mouse,Rat
Conjugation:	Unconjugated
Molecular Weight:	Theoretical: 58 kDa.
Clone:	4E423
Purification:	ProA affinity purified

### Applications

#### Verified Activity:

1. Western blot analysis of Smad2 on different lysates using anti-Smad2 antibody at 1/1,000 dilution. Positive control: Lane 1: Hela, Lane 2: A431, Lane 3: PC12.
2. Immunohistochemical analysis of paraffin-embedded rat cerebellum tissue using anti-Smad2 antibody. Counter stained with hematoxylin.
3. ICC staining Smad2 in Hela cells (green). The nuclear counter stain is DAPI (blue). Cells were fixed in paraformaldehyde, permeabilised with 0.25% Triton X100/PBS.
4. ICC staining Smad2 in HepG2 cells (green). The nuclear counter stain is DAPI (blue). Cells were fixed in paraformaldehyde, permeabilised with 0.25% Triton X100/PBS.
5. ICC staining Smad2 in NIH/3T3 cells (green). The nuclear counter stain is DAPI (blue). Cells were fixed in paraformaldehyde, permeabilised with 0.25% Triton X100/PBS.
6. Flow cytometric analysis of NIH/3T3 cells with Smad2 antibody at 1/50 dilution (red) compared with an unlabelled control (cells without incubation with primary antibody; black). Alexa Fluor 488-conjugated goat anti rabbit IgG was used as the secondary antibody.





Application: FCM, ICC, IHC, IP, WB

Recommended WB: 1:1000-2000; IHC: 1:50-200; ICC: 1:50-200; FCM: 1:50-100

### Properties

Stability & Storage: Store at -20°C or -80°C for 12 months. Avoid repeated freeze-thaw cycles.

Shipping: Shipping with blue ice.

### Antigen Details

Immunogen: Recombinant Protein

Uniprot ID: Q15796

Synonyms: JV18; MADR2; hSMAD2; JV18-1; MADH2; SMAD2; CHTD8; hMAD-2; LDS6

### Research Background

Smad proteins, the mammalian homologs of the *Drosophila* mothers against decapentaplegic (Mad), have been implicated as downstream effectors of TGF $\beta$ /BMP signaling. Smad1 (also designated Madr1 or JV4-1) and Smad5 are effectors of BMP-2 and BMP-4 function, while Smad2 (also designated Madr2 or JV18-1) and Smad3 are involved in TGF $\beta$  and Activin-mediated growth modulation. Smad4 (also designated DPC4) has been shown to mediate all of the above activities through interaction with various Smad family members. Smad6 and Smad7 regulate the response to

Activin/TGF $\beta$  signaling by interfering with TGF $\beta$ -mediated phosphorylation of other Smad proteins.

**Inhibitor · Natural Compounds · Compound Libraries · Recombinant Proteins**

This product is for Research Use Only · Not for Human or Veterinary or Therapeutic Use

Tel:781-999-4286 E\_mail:info@targetmol.com Address:34 Washington Street,Wellesley Hills,MA 02481