

Anti-SMAD1 Antibody (6Y352)

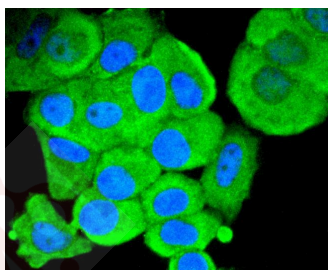
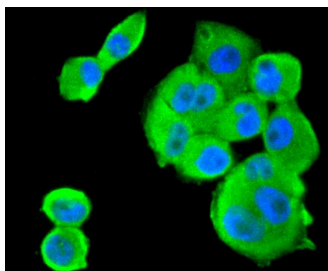
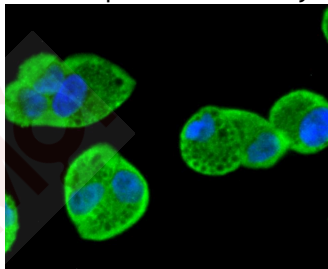
Product Details

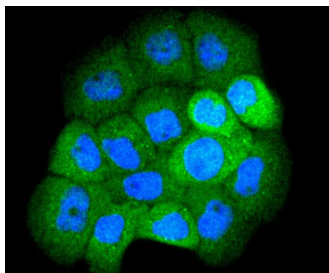
Ig Type:	IgG
Reactivity:	Human,Mouse
Conjugation:	Unconjugated
Molecular Weight:	Theoretical: 52 kDa.
Clone:	6Y352
Purification:	ProA affinity purified

Applications

Verified Activity:

1. ICC staining Smad1 in Hela cells (green). The nuclear counter stain is DAPI (blue). Cells were fixed in paraformaldehyde, permeabilised with 0.25% Triton X100/PBS.
2. ICC staining Smad1 in PANC-1 cells (green). The nuclear counter stain is DAPI (blue). Cells were fixed in paraformaldehyde, permeabilised with 0.25% Triton X100/PBS.
3. ICC staining Smad1 in MCF-7 cells (green). The nuclear counter stain is DAPI (blue). Cells were fixed in paraformaldehyde, permeabilised with 0.25% Triton X100/PBS.
4. ICC staining Smad1 in A431 cells (green). The nuclear counter stain is DAPI (blue). Cells were fixed in paraformaldehyde, permeabilised with 0.25% Triton X100/PBS.





Application: ICC/IF, WB

Recommended WB: 1:500-1000; ICC/IF: 1:100-500

Properties

Stability & Storage: Store at -20°C or -80°C for 12 months. Avoid repeated freeze-thaw cycles.

Shipping: Shipping with blue ice.

Antigen Details

Immunogen: Recombinant Protein

Uniprot ID: Q15797

Synonyms: Mad-related protein 1; Mothers against decapentaplegic homolog 1; BSP1; Mad related protein 1; MADR1; Dwarf A; TGF beta signaling protein 1; Smad1; Mothers against DPP homolog 1; SMAD mothers against DPP homolog 1 Drosophila; DwfA; hSMAD 1; MAD mothers against decapentaplegic homolog 1; JV 41; Madr 1; JV4 1; SMAD family member 1; BSP 1; MADH 1; Transforming growth factor-beta-signaling protein 1; MAD homolog 1; Spinal muscular atrophy distal with upper limb predominance; JV41; Sma and Mad related protein 1; SMAD-1; Transforming growth factor beta signaling protein 1; hSMAD1; MADH1

Research Background

Smad proteins, the mammalian homologs of the Drosophila Mothers against dpp (Mad) have been implicated as downstream effectors of TGF β /BMP signaling. Smad1 (also designated Madr1 or JV4-1), Smad5 and mammalian Smad8 (also designated Smad9 or MADH6) are effectors of BMP2 and BMP4 function while Smad2 (also designated Madr2 or JV18-1) and Smad3 are involved in TGF β and activin-mediated growth modulation. Smad4 (also designated DPC4) has been shown to mediate all of the above activities through interaction with various Smad family members. Smad6 and Smad7 regulate the response to activin/TGF β signaling by interfering with TGF β -mediated phosphorylation of other Smad family members.

Inhibitor · Natural Compounds · Compound Libraries · Recombinant Proteins

This product is for Research Use Only · Not for Human or Veterinary or Therapeutic Use

Tel: 781-999-4286 E_mail: info@targetmol.com Address: 34 Washington Street, Wellesley Hills, MA 02481