

Anti-SMAD1 Antibody (1C774)

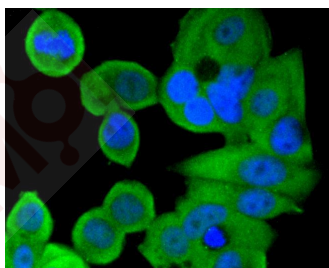
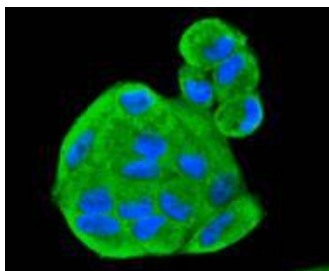
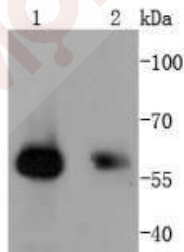
Product Details

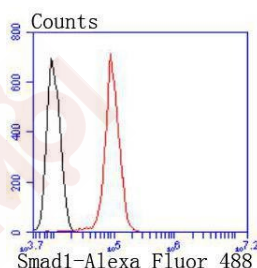
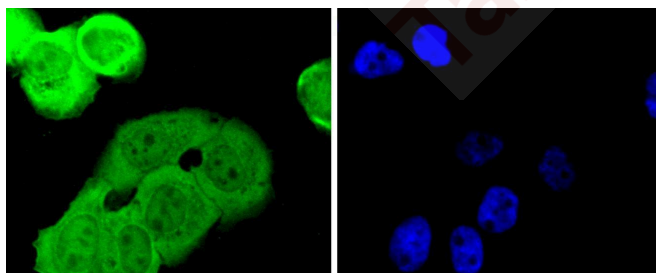
| | |
|-------------------|------------------------|
| Ig Type: | IgG |
| Reactivity: | Human |
| Conjugation: | Unconjugated |
| Molecular Weight: | Theoretical: 58 kDa. |
| Clone: | 1C774 |
| Purification: | ProA affinity purified |

Applications

Verified Activity:

1. Western blot analysis of Smad1 on different lysates using anti-Smad1 antibody at 1/1,000 dilution. Positive control: Lane 1: Human skeletal muscle, Lane 2: Hela.
2. ICC staining Smad1 in Hela cells (green). The nuclear counter stain is DAPI (blue). Cells were fixed in paraformaldehyde, permeabilised with 0.25% Triton X100/PBS.
3. ICC staining Smad1 in MCF-7 cells (green). The nuclear counter stain is DAPI (blue). Cells were fixed in paraformaldehyde, permeabilised with 0.25% Triton X100/PBS.
4. ICC staining Smad1 in A431 cells (green). The nuclear counter stain is DAPI (blue). Cells were fixed in paraformaldehyde, permeabilised with 0.25% Triton X100/PBS.
5. Flow cytometric analysis of Hela cells with Smad1 antibody at 1/50 dilution (red) compared with an unlabelled control (cells without incubation with primary antibody; black). Alexa Fluor 488-conjugated goat anti rabbit IgG was used as the secondary antibody.





Application: FCM,ICC/IF,IHC,WB

Recommended WB: 1:1000-2000; IHC: 1:50-200; ICC/IF: 1:100-500; FCM: 1:50-100

Properties

Stability & Storage: Store at -20°C or -80°C for 12 months. Avoid repeated freeze-thaw cycles.

Shipping: Shipping with blue ice.

Antigen Details

Immunogen: Recombinant Protein

Uniprot ID: Q15797

Smad1;Mad-related protein 1;MAD homolog 1;SMAD mothers against DPP homolog 1 Drosophila;BSP 1;Spinal muscular atrophy distal with upper limb predominance;JV 41;TGF beta signaling protein 1;SMAD-1;Transforming growth factor beta signaling protein 1;Dwarfin A; Synonyms: Mothers against DPP homolog 1;Mothers against decapentaplegic homolog 1;JV4 1;Mad related protein 1;Transforming growth factor-beta-signaling protein 1;hSMAD 1;hSMAD1;MAD mothers against decapentaplegic homolog 1;BSP1;JV41;DwfA;Sma and Mad related protein 1; MADH1;MADH 1;SMAD family member 1;Madr 1;MADR1

Research Background

Smad proteins, the mammalian homologs of the Drosophila Mothers against dpp (Mad) have been implicated as downstream effectors of TGFβ/BMP signaling. Smad1 (also designated Madr1 or JV4-1), Smad5 and mammalian Smad8 (also designated Smad9 or MADH6) are effectors of BMP2 and BMP4 function while Smad2 (also designated Madr2 or JV18-1) and Smad3 are involved in TGFβ and activin-mediated growth modulation. Smad4 (also designated DPC4) has been shown to mediate all of the above activities through interaction with various Smad family members. Smad6 and Smad7 regulate the response to activin/TGFβ signaling by interfering with TGFβ-mediated phosphorylation of other Smad family members.

Inhibitor · Natural Compounds · Compound Libraries · Recombinant Proteins

This product is for Research Use Only · Not for Human or Veterinary or Therapeutic Use

Tel:781-999-4286 E_mail:info@targetmol.com Address:34 Washington Street,Wellesley Hills,MA 02481