

Anti-SLINGSHOT-1L Antibody (4Y112)

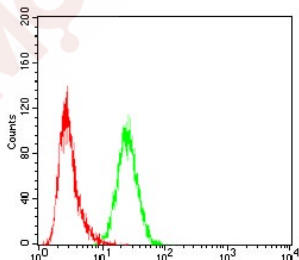
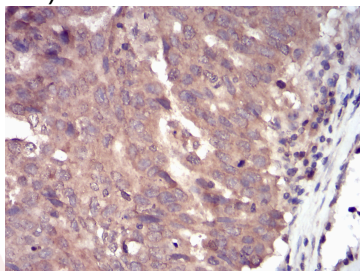
Product Details

Reactivity:	Human
Conjugation:	Unconjugated
Molecular Weight:	Theoretical: 116 kDa.
Clone:	4Y112
Purification:	ProA affinity purified

Applications

Verified Activity:

1. Immunohistochemical analysis of paraffin-embedded human ovarian cancer tissue using anti- Slingshot homolog 1 antibody. Counter stained with hematoxylin.
2. Flow cytometric analysis of Hela cells with Slingshot homolog 1 antibody at 1/100 dilution (green) compared with an unlabelled control (cells without incubation with primary antibody; red).



Application:	FCM,IHC
Recommended	IHC: 1:50-200; FCM: 1:50-100

Properties

Stability & Storage:	Store at -20°C or -80°C for 12 months. Avoid repeated freeze-thaw cycles.
Shipping:	Shipping with blue ice.

Antigen Details

Immunogen:	Recombinant Protein
Uniprot ID:	Q8WYL5
Synonyms:	OTTMUSP00000031415;hSSH-1L;Protein phosphatase Slingshot homolog 1;slingshot like 1;SSH-1L;mSSH 1L;SLINGSHOT1L;Gm1394;Gm1395;AW551225;Ssh1;SSH 1L;SSH1_HUMAN;slingshot homolog 1;SSH-like protein 1;Coro1c;SSH 1;coronin, actin binding protein 1C;Slingshot1;slingshot 1L;Slingshot 1

Research Background

Slingshot homolog (SSH) family of phosphatases, which regulate actin filament dynamics. The SSH proteins dephosphorylate and activate the actin binding/depolymerizing factor cofilin, which subsequently binds to actin filaments and stimulates their disassembly. Cofilin is inactivated by kinases such as LIM domain kinase-1 (LIMK1), which may also be dephosphorylated and inactivated by SSH proteins. The SSH family thus appears to play a role in actin dynamics by reactivating cofilin proteins. Alternatively spliced transcript variants encoding different isoforms have been described for this gene.

Inhibitor · Natural Compounds · Compound Libraries · Recombinant Proteins

This product is for Research Use Only · Not for Human or Veterinary or Therapeutic Use

Tel:781-999-4286 E_mail:info@targetmol.com Address:34 Washington Street,Wellesley Hills,MA 02481