

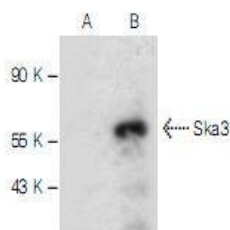
Anti-SKA3 Antibody (3K426)

Product Details

Reactivity:	Human,Mouse,Rat
Conjugation:	Unconjugated
Molecular Weight:	Theoretical: 46 kDa.
Clone:	3K426
Purification:	ProA affinity purified

Applications

Verified Activity: 1. Western blot analysis of Ska3 expression in non-transfected (A) and human Ska3 transfected (B) 293T whole cell lysates.



Application:	IF,IP,WB
Recommended	WB: 1:100-1000; IP: 1-2 µg per 100-500 µg of total protein(1 ml of cell lysate)

Properties

Stability & Storage:	Store at -20°C or -80°C for 12 months. Avoid repeated freeze-thaw cycles.
Shipping:	Shipping with blue ice.

Antigen Details

Immunogen:	Amino acids 154-166 within an internal region of Ska3 of human origin
Antigen Species:	human
Uniprot ID:	Q8IX90
Synonyms:	Spindle and kinetochore-associated protein 3;RAMA1;C13orf3;Spindle and kinetochore associated complex subunit 3;SKA 3

Research Background

Ska3, also designated C13orf3 or RAMA1, is a 412 amino acid protein that belongs to the RAMA1 family of proteins. A component of the SKA1 complex, Ska3 localizes to the outer kinetochore and spindle microtubules during mitosis. The SKA1 complex is a microtubule-binding subcomplex of the outer kinetochore and is composed of two Ska1-Ska2 heterodimers, each heterodimer interacting with a Ska3 homodimer. Within the complex, which is important for chromosome segregation and facilitates microsphere movement along microtubules, Ska3 acts as a mediator of microtubule-stimulated oligomerization. The gene encoding for Ska3 maps to chromosome 13. Comprising nearly 4% of human DNA, chromosome 13 contains around 114 million base pairs and 400 genes. Key tumor suppressor genes on chromosome 13 include the breast cancer susceptibility gene, BRCA2, and the RB1 (retinoblastoma) gene.

A DRUG SCREENING EXPERT

RB1 encodes a crucial tumor suppressor protein which, when defective, leads to malignant growth in the retina and has been implicated in a variety of other cancers. The gene SLITRK1, which is associated with Tourette syndrome, is on chromosome 13. As with most chromosomes, polysomy of part or all of chromosome 13 is deleterious to development and decreases the odds of survival. Trisomy 13, also known as Patau syndrome, is quite deadly and the few who survive past one year suffer from permanent neurologic defects, difficulty eating and vulnerability to serious respiratory infections.

Inhibitor · Natural Compounds · Compound Libraries · Recombinant Proteins

This product is for Research Use Only · Not for Human or Veterinary or Therapeutic Use

Tel:781-999-4286 E_mail:info@targetmol.com Address:34 Washington Street,Wellesley Hills,MA 02481