

Anti-Phospho-PTPN11 (Tyr580) Polyclonal Antibody 2

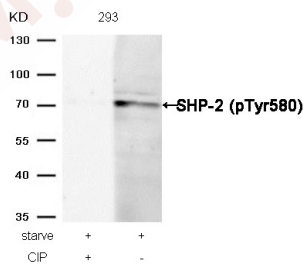
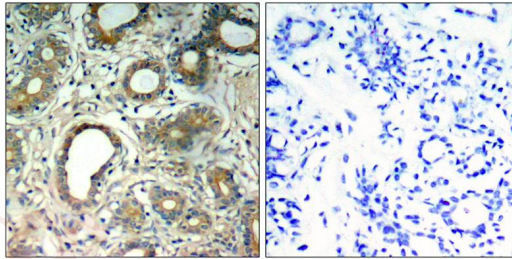
Product Details

Ig Type:	IgG
Reactivity:	Human,Mouse,Rat
Conjugation:	Unconjugated
Purification:	Antibodies were produced by immunizing rabbits with synthetic phosphopeptide and KLH conjugates. Antibodies were purified by affinity-chromatography using epitope-specific phosphopeptide. Non-phospho specific antibodies were removed by chromatography using non-phosphopeptide.

Applications

Verified Activity:

1. Immunohistochemical analysis of paraffin-embedded human breast carcinoma tissue using SHP-2 (Phospho-Tyr580) Antibody TMAC-03751 (left) or the same antibody preincubated with blocking peptide (right).
2. Western blot analysis of extracts from 293 cells, treated with starve or calf intestinal phosphatase (CIP), using SHP-2 (Phospho-Tyr580) Antibody TMAC-03751.



Application: IHC,WB

Properties

Stability & Storage:	Store at 2°C-8°C for 1 month. Store at -20°C or -80°C for 12 months. Avoid repeated freeze-thaw cycles.
Shipping:	Shipping with blue ice.

Antigen Details

Immunogen: Peptide sequence around phosphorylation site of tyrosine 580 (R-V-Y(p)-E-N) derived from Human SHP-2

Antigen Species: Human

Uniprot ID: Q06124

Synonyms: p-PTPN11 (Y580);p-PTPN11 (Tyr580);PTPN11 (p-Tyr580);PTPN11 (p-Y580)

Research Background

Acts downstream of various receptor and cytoplasmic protein tyrosine kinases to participate in the signal transduction from the cell surface to the nucleus.

Inhibitor · Natural Compounds · Compound Libraries · Recombinant Proteins

This product is for Research Use Only · Not for Human or Veterinary or Therapeutic Use

Tel:781-999-4286 E_mail:info@targetmol.com Address:34 Washington Street,Wellesley Hills,MA 02481