

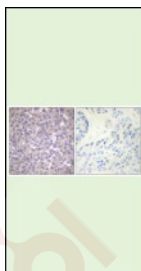
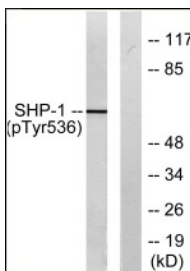
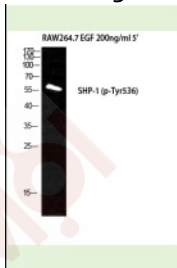
Anti-Phospho-SHP-1 (Tyr536) Polyclonal Antibody 2

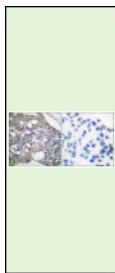
Product Details

Ig Type:	IgG
Reactivity:	Human,Mouse,Rat
Conjugation:	Unconjugated
Purification:	The antibody was affinity-purified from rabbit antiserum by affinity-chromatography using epitope-specific immunogen.

Applications

- Verified Activity:
1. Western Blot analysis of RAW264.7+EGF cells.
 2. Western blot analysis of lysates from RAW264.7 cells treated with EGF 200ng/ml 5'. The lane on the right is blocked with the phospho peptide.
 3. Immunohistochemical analysis of paraffin-embedded Human breast cancer. Antibody was diluted at 1:100 (4°C overnight). High-pressure and temperature Tris-EDTA,pH8.0 was used for antigen retrieval. Negative contrl (right) obtained from antibody was pre-absorbed by immunogen peptide.
 4. Immunohistochemistry analysis of paraffin-embedded human breast carcinoma. The picture on the right is blocked with the phospho peptide.





Application: IF,IHC
Recommended WB: 1:500-2000; IHC: 1:100-300; IF: 1:50-200

Properties

Stability & Storage: Store at 2°C-8°C for 1 month. Store at -20°C or -80°C for 12 months. Avoid repeated freeze-thaw cycles.
Shipping: Shipping with blue ice.

Antigen Details

Immunogen: Peptide sequence around phosphorylation site of tyrosine 536 (S-E-Y(p)-G-N) derived from Human SHP-1
Antigen Species: Human
Uniprot ID: P29350
Synonyms: SH1 (p-Tyr536);p-SHP-1 (Y536);SH1 (p-Y536);p-SHP-1 (Tyr536)

Research Background

Acts downstream of various receptor and cytoplasmic protein tyrosine kinases to participate in the signal transduction from the cell surface to the nucleus.

Inhibitor · Natural Compounds · Compound Libraries · Recombinant Proteins

This product is for Research Use Only· Not for Human or Veterinary or Therapeutic Use

Tel:781-999-4286 E_mail:info@targetmol.com Address:34 Washington Street,Wellesley Hills,MA 02481