

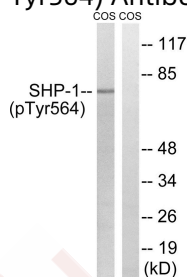
Anti-Phospho-SHP-1 (Tyr564) Polyclonal Antibody 3

Product Details

Ig Type:	IgG
Reactivity:	Human
Conjugation:	Unconjugated
Molecular Weight:	Actual: 70 kDa.
Purification:	Antibodies were produced by immunizing rabbits with synthetic phosphopeptide and KLH conjugates. Antibodies were purified by affinity-chromatography using epitope-specific phosphopeptide. Non-phospho specific antibodies were removed by chromatography using non-phosphopeptide.

Applications

Verified Activity: 1. Western blot analysis of extracts from COS7 cells treated with EGF using SHP-1 (Phospho-Tyr564) Antibody. The lane on the right is treated with the antigen-specific peptide.



Application:	WB
Recommended	WB: 1:500-1000

Properties

Stability & Storage:	Store at -20°C or -80°C for 12 months. Avoid repeated freeze-thaw cycles.
Shipping:	Shipping with blue ice.

Antigen Details

Immunogen:	Peptide sequence around phosphorylation site of tyrosine 564(D-V-Y(p)-E-N) derived from Human SHP-1
Antigen Species:	Human
Uniprot ID:	P29350
Synonyms:	p-SHP-1 (Tyr564);SH1 (p-Y564);SH1 (p-Tyr564);p-SHP-1 (Y564)

Research Background

Acts downstream of various receptor and cytoplasmic protein tyrosine kinases to participate in the signal transduction from the cell surface to the nucleus.

Inhibitor · Natural Compounds · Compound Libraries · Recombinant Proteins

This product is for Research Use Only · Not for Human or Veterinary or Therapeutic Use

Tel:781-999-4286 E_mail:info@targetmol.com Address:34 Washington Street,Wellesley Hills,MA 02481