

Anti-Phospho-INPP5D (Tyr1021) Polyclonal Antibody

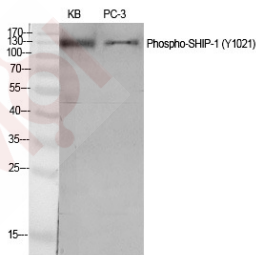
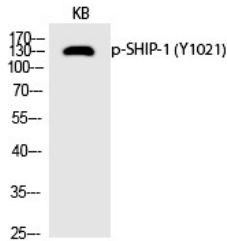
Product Details

Ig Type:	IgG
Reactivity:	Human,Mouse,Rat
Conjugation:	Unconjugated
Molecular Weight:	Actual: 133 kDa.
Purification:	The antibody was affinity-purified from rabbit antiserum by affinity-chromatography using epitope-specific immunogen.

Applications

Verified Activity:

1. Western Blot analysis of KB cells using Phospho-SHIP-1 (Y1021) Polyclonal Antibody.
2. Western Blot analysis of KB PC-3 cells using Phospho-SHIP-1 (Y1021) Polyclonal Antibody.



Application:	ELISA,WB
Recommended	WB: 1:500-2000; ELISA: 1:40000

Properties

Stability & Storage:	Store at -20°C or -80°C for 12 months. Avoid repeated freeze-thaw cycles.
Shipping:	Shipping with blue ice.

Antigen Details

Immunogen: A synthesized phosphopeptide: human SHIP-1 around the phosphorylation site of Y1021
Antigen Species: Human
Uniprot ID: Q92835
Synonyms: p-INPP5D (Tyr1021);INPP5D (p-Tyr1021);INPP5D (p-Y1021);p-INPP5D (Y1021)

Inhibitor · Natural Compounds · Compound Libraries · Recombinant Proteins

This product is for Research Use Only· Not for Human or Veterinary or Therapeutic Use

Tel:781-999-4286 E_mail:info@targetmol.com Address:34 Washington Street,Wellesley Hills,MA 02481