

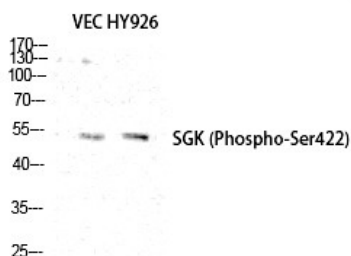
Anti-Phospho-SGK1 (Ser422) Polyclonal Antibody

Product Details

Ig Type:	IgG
Reactivity:	Human,Mouse,Rat
Conjugation:	Unconjugated
Molecular Weight:	Actual: 57 kDa.
Purification:	The antibody was affinity-purified from rabbit antiserum by affinity-chromatography using epitope-specific immunogen.

Applications

Verified Activity: 1. Western Blot analysis of VEC HY926 cells using Phospho-SGK1 (S422) Polyclonal Antibody.



Application: ELISA,IF,IHC,WB
Recommended WB: 1:500-2000; IHC: 1:100-300; ELISA: 1:40000; IF: 1:50-200

Properties

Stability & Storage: Store at -20°C or -80°C for 12 months. Avoid repeated freeze-thaw cycles.
Shipping: Shipping with blue ice.

Antigen Details

Immunogen: A synthesized phosphopeptide: human SGK1 around the phosphorylation site of S422
Antigen Species: Human
Uniprot ID: O00141
Synonyms: SGK1 (p-S422);p-SGK1 (Ser422);p-SGK1 (S422);SGK1 (p-Ser422)

Inhibitor · Natural Compounds · Compound Libraries · Recombinant Proteins

This product is for Research Use Only. Not for Human or Veterinary or Therapeutic Use

Tel:781-999-4286 E_mail:info@targetmol.com Address:34 Washington Street,Wellesley Hills,MA 02481