

Anti-SFPQ Antibody (1W928)

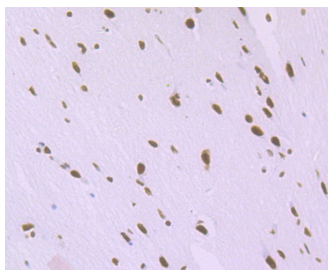
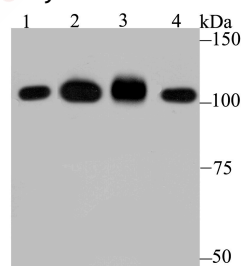
Product Details

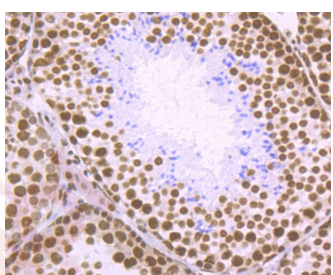
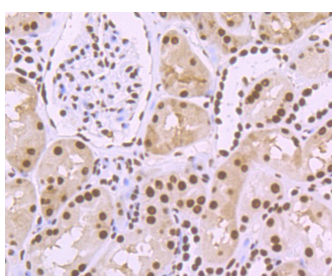
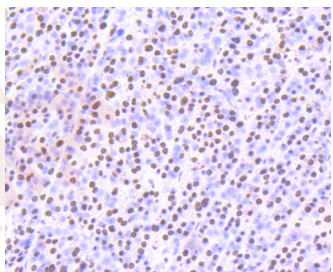
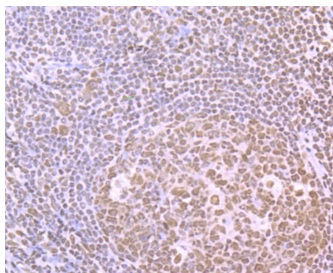
Ig Type:	IgG
Reactivity:	Human,Mouse,Rat
Conjugation:	Unconjugated
Molecular Weight:	Theoretical: 100 kDa.
Clone:	1W928
Purification:	ProA affinity purified

Applications

Verified Activity:

1. Western blot analysis of SFPQ on different lysates using anti-SFPQ antibody at 1/1,000 dilution. Positive control: Lane 1: K562, Lane 2: Daudi, Lane 3: Mouse testis, Lane 4: Mouse lung.
2. Immunohistochemical analysis of paraffin-embedded rat brain tissue using anti-SFPQ antibody. Counter stained with hematoxylin.
3. Immunohistochemical analysis of paraffin-embedded human tonsil tissue using anti-SFPQ antibody. Counter stained with hematoxylin.
4. Immunohistochemical analysis of paraffin-embedded human liver cancer tissue using anti-SFPQ antibody. Counter stained with hematoxylin.
5. Immunohistochemical analysis of paraffin-embedded human kidney tissue using anti-SFPQ antibody. Counter stained with hematoxylin.
6. Immunohistochemical analysis of paraffin-embedded mouse testis tissue using anti-SFPQ antibody. Counter stained with hematoxylin.





Application: ICC,IF,IHC,WB

Recommended WB: 1:500-2000; IHC: 1:50-200; ICC: 1:10-50

Properties

Stability & Storage: Store at -20°C or -80°C for 12 months. Avoid repeated freeze-thaw cycles.

Shipping: Shipping with blue ice.

Antigen Details

Immunogen: Recombinant Protein

Uniprot ID: P23246

Synonyms: PTB-associated-splicing factor;Protein phosphatase 1 regulatory subunit 140;Splicing factor; 100 kDa subunit;100 kDa DNA-pairing protein;proline- and glutamine-rich;POMP100;DNA binding p52/p100 complex 100 kDa subunit;Polypyrimidine tract binding protein associated splicing factor;PTB associated splicing factor;PPP1R140;100 kDa DNA pairing protein; SFPQ_HUMAN;Polypyrimidine tract-binding protein-associated-splicing factor;DNA-binding

p52/p100 complex;Splicing factor proline and glutamine rich;Sfpq;PSF;Splicing factor proline/glutamine rich (polypyrimidine tract binding protein associated);Splicing factor proline/glutamine rich;hPOMp100

Research Background

DNA- and RNA binding protein, involved in several nuclear processes. Essential pre-mRNA splicing factor required early in spliceosome formation and for splicing catalytic step II, probably as a heteromer with NONO. Binds to pre-mRNA in spliceosome C complex, and specifically binds to intronic polypyrimidine tracts. Involved in regulation of signal-induced alternative splicing. Interacts with U5 snRNA, probably by binding to a purine-rich sequence located on the 3' side of U5 snRNA stem 1b. May be involved in a pre-mRNA coupled splicing and polyadenylation process as component of a snRNP-free complex with SNRPA/U1A. The SFPQ-NONO heteromer associated with MATR3 may play a role in nuclear retention of defective RNAs. SFPQ may be involved in homologous DNA pairing; in vitro, promotes the invasion of ssDNA between a duplex DNA and produces a D-loop formation.

Inhibitor · Natural Compounds · Compound Libraries · Recombinant Proteins

This product is for Research Use Only· Not for Human or Veterinary or Therapeutic Use

Tel:781-999-4286 E_mail:info@targetmol.com Address:34 Washington Street,Wellesley Hills,MA 02481