

Anti-Phospho-SF1 (Ser82) Polyclonal Antibody

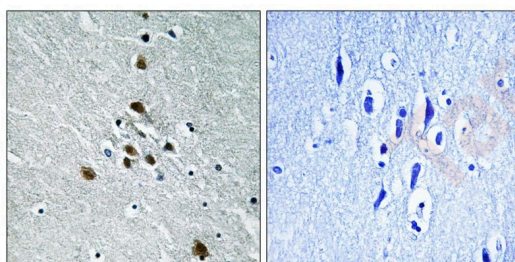
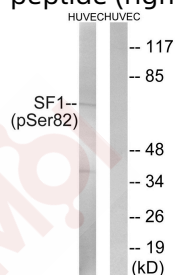
Product Details

Ig Type:	IgG
Reactivity:	Human,Mouse
Conjugation:	Unconjugated
Molecular Weight:	Actual: 68 kDa.
Purification:	Antibodies were produced by immunizing rabbits with synthetic phosphopeptide and KLH conjugates. Antibodies were purified by affinity-chromatography using epitope-specific phosphopeptide. Non-phospho specific antibodies were removed by chromatography using non-phosphopeptide.

Applications

Verified Activity:

1. Western blot analysis of extracts from HUVEC cells treated with anisomycin using SF1 (Phospho-Ser82) Antibody TMAC-03714. The lane on the right is treated with the antigen-specific peptide.
2. Immunohistochemical analysis of paraffin-embedded human brain tissue using SF1 (Phospho-Ser82) antibody TMAC-03714 (left) or the same antibody preincubated with blocking peptide (right).



Application:	IHC,WB
Recommended	WB: 1:500-1000; IHC: 1:50-100

Properties

Stability & Storage:	Store at -20°C or -80°C for 12 months. Avoid repeated freeze-thaw cycles.
Shipping:	Shipping with blue ice.

Antigen Details

Immunogen: Peptide sequence around phosphorylation site of Serine 82(S-P-S(p)-P-E) derived from Human SF1

Antigen Species: Human

Uniprot ID: Q15637

Synonyms: p-SF1 (Ser82);p-SF1 (S82);SF1 (p-S82);SF1 (p-Ser82)

Research Background

Necessary for the ATP-dependent first step of spliceosome assembly. Binds to the intron branch point sequence (BPS) 5'-UACUAAC-3' of the pre-mRNA. May act as transcription repressor.

Inhibitor · Natural Compounds · Compound Libraries · Recombinant Proteins

This product is for Research Use Only · Not for Human or Veterinary or Therapeutic Use

Tel:781-999-4286 E_mail:info@targetmol.com Address:34 Washington Street,Wellesley Hills,MA 02481