

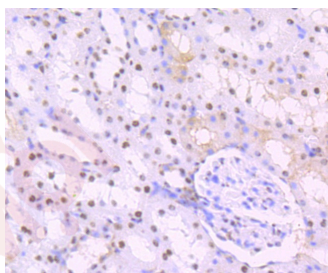
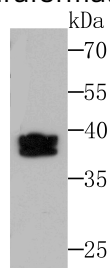
## Anti-SET Antibody (3V307)

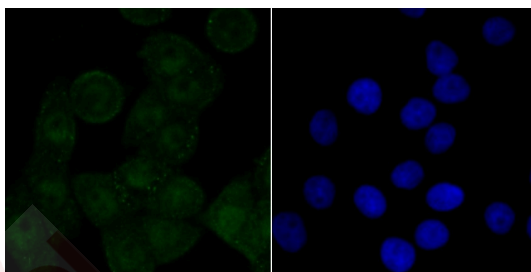
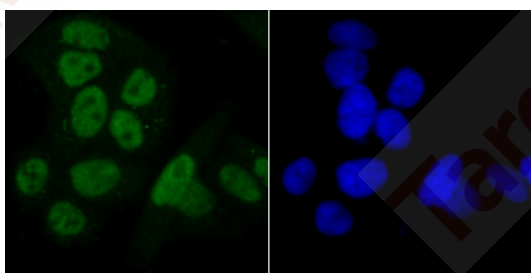
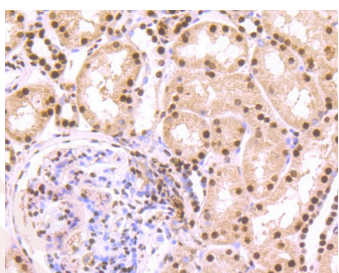
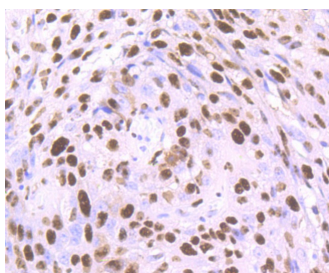
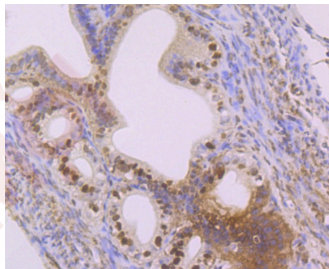
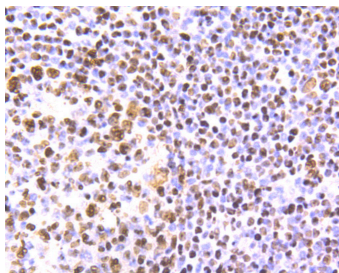
### Product Details

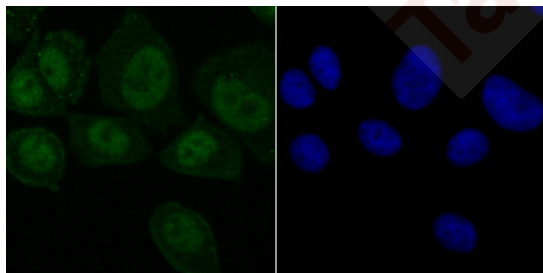
Ig Type:	IgG
Reactivity:	Human,Mouse,Rat
Conjugation:	Unconjugated
Molecular Weight:	Theoretical: 37 kDa.
Clone:	3V307
Purification:	ProA affinity purified

### Applications

- Verified Activity:
1. Western blot analysis of SET on K562 cell lysates using anti-SET at 1/500 dilution.
  2. Immunohistochemical analysis of paraffin-embedded rat kidney tissue using anti-SET antibody. Counter stained with hematoxylin.
  3. Immunohistochemical analysis of paraffin-embedded human tonsil tissue using anti-SET antibody. Counter stained with hematoxylin.
  4. Immunohistochemical analysis of paraffin-embedded mouse fallopian tube tissue using anti-SET antibody. Counter stained with hematoxylin.
  5. Immunohistochemical analysis of paraffin-embedded human lung cancer tissue using anti-SET antibody. Counter stained with hematoxylin.
  6. Immunohistochemical analysis of paraffin-embedded human kidney tissue using anti-SET antibody. Counter stained with hematoxylin.
  7. ICC staining SET in Hela cells (green). The nuclear counter stain is DAPI (blue). Cells were fixed in paraformaldehyde, permeabilised with 0.25% Triton X100/PBS.
  8. ICC staining SET in LOVO cells (green). The nuclear counter stain is DAPI (blue). Cells were fixed in paraformaldehyde, permeabilised with 0.25% Triton X100/PBS.
  9. ICC staining SET in MCF-7 cells (green). The nuclear counter stain is DAPI (blue). Cells were fixed in paraformaldehyde, permeabilised with 0.25% Triton X100/PBS.







Application: FCM,ICC,IF,IHC,IP,WB

Recommended WB: 1:500-2000; IHC: 1:50-200; ICC: 1:50-200; IP: 1:10-50; FCM: 1:50-100

### Properties

Stability & Storage: Store at -20°C or -80°C for 12 months. Avoid repeated freeze-thaw cycles.

Shipping: Shipping with blue ice.

### Antigen Details

Immunogen: Recombinant Protein

Uniprot ID: Q01105

Synonyms: HLA DR associated protein II;IGAAD;SET nuclear oncogene;TAFI;Template-Activating Factor-I, chromatin remodelling factor;Protein SET;TAF I;IPP2A2;Template-activating factor I;I2PP2A; SET\_HUMAN;Template activating factor I;HLA-DR-associated protein II;I 2PP2A;Inhibitor of GzmA-activated DNase;Phosphatase 2A inhibitor I2PP2A;Set;PHAPII;SET translocation (myeloid leukemia-associated);inhibitor-2 of protein phosphatase-2A;Inhibitor of granzyme A activated DNase;I-2PP2A;SET translocation;protein phosphatase type 2A inhibitor;Inhibitor of granzyme A-activated DNase;2PP2A;TAF IBETA;TAF-I

### Research Background

Multitasking protein, involved in apoptosis, transcription, nucleosome assembly and histone chaperoning. Isoform 2 apoptotic activity is mediated by inhibition of the GZMA-activated DNase, NME1. In the course of cytotoxic T-lymphocyte (CTL)-induced apoptosis, GZMA cleaves SET, disrupting its binding to NME1 and releasing NME1 inhibition. Isoform 1 and isoform 2 are potent inhibitors of protein phosphatase 2A. Isoform 1 and isoform 2 inhibit EP300/CREBBP and PCAF-mediated acetylation of histones (HAT) and nucleosomes, most probably by masking the accessibility of lysines of histones to the acetylases. The predominant target for inhibition is histone H4. HAT inhibition leads to silencing of HAT-dependent transcription and prevents active demethylation of DNA. Both isoforms stimulate DNA replication of the adenovirus genome complexed with viral core proteins; however, isoform 2 specific activity is higher.

**Inhibitor · Natural Compounds · Compound Libraries · Recombinant Proteins**

This product is for Research Use Only · Not for Human or Veterinary or Therapeutic Use

Tel:781-999-4286 E\_mail:info@targetmol.com Address:34 Washington Street,Wellesley Hills,MA 02481