

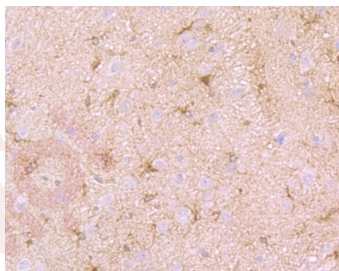
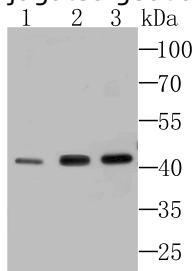
## Anti-Septin 2 Antibody (7L577)

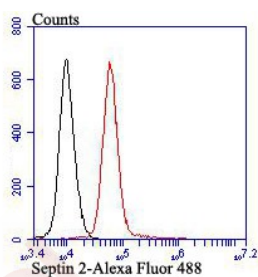
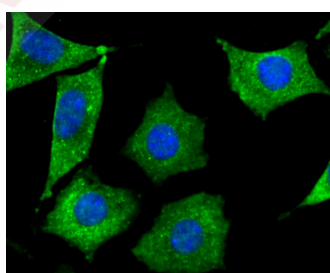
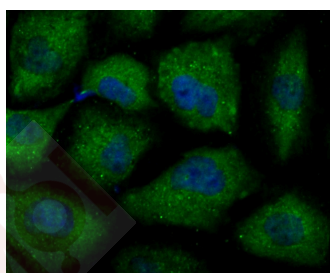
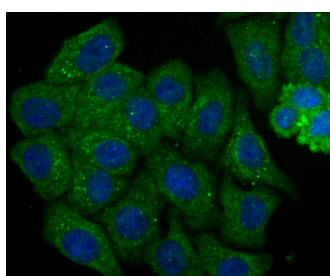
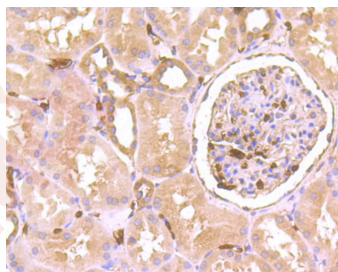
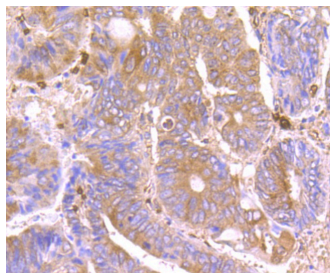
### Product Details

|                   |                        |
|-------------------|------------------------|
| Ig Type:          | IgG                    |
| Reactivity:       | Human,Mouse,Rat        |
| Conjugation:      | Unconjugated           |
| Molecular Weight: | Theoretical: 41 kDa.   |
| Clone:            | 7L577                  |
| Purification:     | ProA affinity purified |

### Applications

1. Western blot analysis of Septin 2 on different cell lysates using anti-Septin 2 at 1/500 dilution. Positive control: Line 1: Mouse brain, Line 2: SiHa, Line 3: K562.
2. Immunohistochemical analysis of paraffin-embedded rat brain tissue using anti-Septin 2 antibody. Counter stained with hematoxylin.
3. Immunohistochemical analysis of paraffin-embedded human colon cancer tissue using anti-Septin 2 antibody. Counter stained with hematoxylin.
4. Immunohistochemical analysis of paraffin-embedded human kidney tissue using anti-Septin 2 antibody. Counter stained with hematoxylin.
5. ICC staining Septin 2 in HepG2 cells (green). The nuclear counter stain is DAPI (blue). Cells were fixed in paraformaldehyde, permeabilised with 0.25% Triton X100/PBS.
6. ICC staining Septin 2 in HUVEC cells (green). The nuclear counter stain is DAPI (blue). Cells were fixed in paraformaldehyde, permeabilised with 0.25% Triton X100/PBS.
7. ICC staining Septin 2 in SHSY-5Y cells (red). The nuclear counter stain is DAPI (blue). Cells were fixed in paraformaldehyde, permeabilised with 0.25% Triton X100/PBS.
8. Flow cytometric analysis of K562 cells with Septin 2 antibody at 1/50 dilution (red) compared with an unlabelled control (cells without incubation with primary antibody; black). Alexa Fluor 488-conjugated goat anti-rabbit IgG was used as the secondary antibody.





Application: FCM, ICC, IF, IHC, IP, WB

Recommended WB: 1:500-1000; IHC: 1:50-200; ICC: 1:50-200; FCM: 1:50-100

### Properties

Stability & Storage: Store at -20°C or -80°C for 12 months. Avoid repeated freeze-thaw cycles.

Shipping: Shipping with blue ice.

---

### Antigen Details

Immunogen: Recombinant Protein

Uniprot ID: Q15019

Synonyms: Pnutl3;septin2;Neural precursor cell expressed developmentally down regulated 5;Protein NEDD5;hNEDD5;NEDD5;Neural precursor cell expressed developmentally down regulated protein 5;DIFF6;SEPT2;NEDD 5;KIAA0158

---

### Research Background

Filament-forming cytoskeletal GTPase. Forms a filamentous structure with SEPT12, SEPT6, SEPT2 and probably SEPT4 at the sperm annulus which is required for the structural integrity and motility of the sperm tail during postmeiotic differentiation . Required for normal organization of the actin cytoskeleton. Plays a role in the biogenesis of polarized columnar-shaped epithelium by maintaining polyglutamylated microtubules, thus facilitating efficient vesicle transport, and by impeding MAP4 binding to tubulin. Required for the progression through mitosis. Forms a scaffold at the midplane of the mitotic spindle required to maintain CENPE localization at kinetochores and consequently chromosome congression. During anaphase, may be required for chromosome segregation and spindle elongation. Plays a role in ciliogenesis and collective cell movements. In cilia, required for the integrity of the diffusion barrier at the base of the primary cilium that prevents diffusion of transmembrane proteins between the cilia and plasma membranes: probably acts by regulating the assembly of the tectonic-like complex (also named B9 complex) by localizing TMEM231 protein.

**Inhibitor · Natural Compounds · Compound Libraries · Recombinant Proteins**

This product is for Research Use Only· Not for Human or Veterinary or Therapeutic Use

Tel:781-999-4286 E\_mail:info@targetmol.com Address:34 Washington Street,Wellesley Hills,MA 02481