

## Anti-Securin Antibody (7P480)

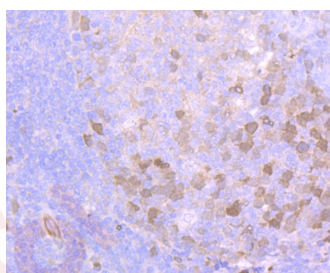
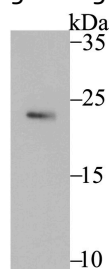
### Product Details

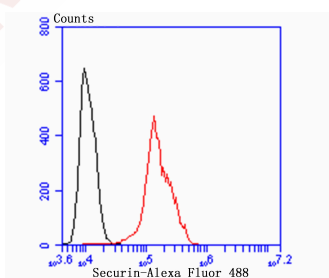
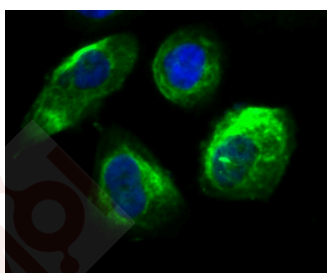
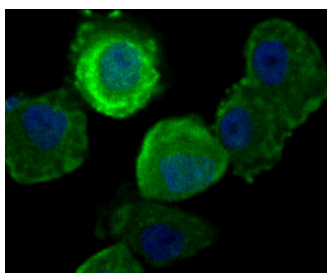
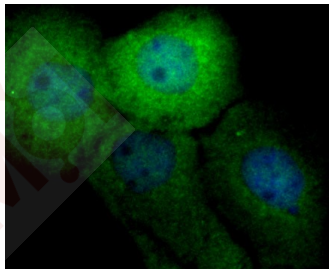
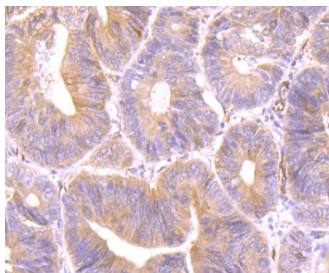
Ig Type:	IgG
Reactivity:	Human
Conjugation:	Unconjugated
Molecular Weight:	Theoretical: 22 kDa.
Clone:	7P480
Purification:	ProA affinity purified

### Applications

#### Verified Activity:

1. Western blot analysis of Securin on SiHa cell lysate using anti-Securin antibody at 1/500 dilution.
2. Immunohistochemical analysis of paraffin-embedded human tonsil tissue using anti-Securin antibody. Counter stained with hematoxylin.
3. Immunohistochemical analysis of paraffin-embedded human colon cancer tissue using anti-Securin antibody. Counter stained with hematoxylin.
4. ICC staining Securin in A431 cells (green). The nuclear counter stain is DAPI (blue). Cells were fixed in paraformaldehyde, permeabilised with 0.25% Triton X100/PBS.
5. ICC staining Securin in HUVEC cells (green). The nuclear counter stain is DAPI (blue). Cells were fixed in paraformaldehyde, permeabilised with 0.25% Triton X100/PBS.
6. ICC staining Securin in PC-3M cells (green). The nuclear counter stain is DAPI (blue). Cells were fixed in paraformaldehyde, permeabilised with 0.25% Triton X100/PBS.
7. Flow cytometric analysis of A431 cells with Securin antibody at 1/100 dilution (red) compared with an unlabelled control (cells without incubation with primary antibody; black). Alexa Fluor 488-conjugated goat anti-rabbit IgG was used as the secondary antibody.





Application: FCM, ICC, IF, IHC, IP, WB

Recommended WB: 1:500; IHC: 1:50-200; ICC: 1:50-200; FCM: 1:50-100

### Properties

Stability & Storage: Store at -20°C or -80°C for 12 months. Avoid repeated freeze-thaw cycles.

Shipping: Shipping with blue ice.

### Antigen Details

Immunogen:	Recombinant Protein
Uniprot ID:	O95997
Synonyms:	TUTR1;Esp1-associated protein;MGC138276;Tumor-transforming protein 1;Securin;AW555095;Pituitary tumor-transforming gene 1;EAP 1;hPTTG;Pituitary tumor-transforming 1, isoform CRA_b;Cut2;PTTG1_HUMAN;ESP1 associated protein 1;Pituitary tumor-transforming gene 1 protein;PTTG1 protein;Pituitary tumor-transforming 1, isoform CRA_a;EAP1;PTTG;PTTG1;TUTR 1;Pituitary tumor transforming protein 1;MGC126883;PTTG 1;Pds1;C87862;Tumor transforming 1;Pituitary tumor transforming 1;Pttg3;Tumor transforming protein 1

---

### Research Background

The product of the oncogene PTTG, pituitary tumor transforming gene, is a human homolog of the anaphase-inhibitor vertebrate protein, securin. PTTG contains a basic amino-terminal domain and an acidic carboxy-terminal domain, which acts as a transactivation domain when fused to a heterologous DNA binding domain. Human PTTG is overexpressed in Jurkat and is also detected in human thymus, testis and placenta. PTTG is mainly expressed in the cytoplasm and is also partially localized to the nucleus. Vertebrate PTTG regulates the separin Esp1, which promotes chromatid separation, to overcome the cohesive forces that hold sister chromatids together. This regulatory function of PTTG suggests that defective regulation of cohesion may contribute to cancer by promoting chromosome instability. Although vertebrate PTTG shares cell-cycle functions with its yeast securin counterparts Pds1p and Cut2, none share sequence homology.

**Inhibitor · Natural Compounds · Compound Libraries · Recombinant Proteins**

This product is for Research Use Only · Not for Human or Veterinary or Therapeutic Use

Tel:781-999-4286 E\_mail:info@targetmol.com Address:34 Washington Street,Wellesley Hills,MA 02481