

Anti-SEC31A Antibody (5Y312)

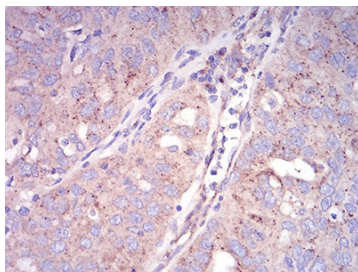
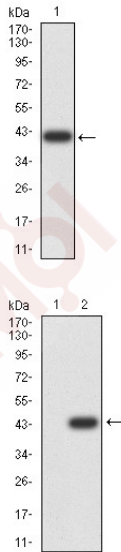
Product Details

Reactivity:	Human
Conjugation:	Unconjugated
Molecular Weight:	Theoretical: 133 kDa.
Clone:	5Y312
Purification:	ProA affinity purified

Applications

Verified Activity:

1. Western blot analysis of SEC31A on human SEC31A recombinant protein using anti-SEC31A antibody at 1/1,000 dilution.
2. Western blot analysis of SEC31A on HEK293 (1) and SEC31A-hlgGfc transfected HEK293 (2) cell lysate using anti-SEC31A antibody at 1/1,000 dilution.
3. Immunohistochemical analysis of paraffin-embedded human ovarian cancer tissue using anti-SEC31A antibody. Counter stained with hematoxylin.



Application: IHC,WB

Recommended WB: 1:500-2000; IHC: 1:50-200

Properties

Stability & Storage: Store at -20°C or -80°C for 12 months. Avoid repeated freeze-thaw cycles.

Shipping: Shipping with blue ice.

Antigen Details

Immunogen: Recombinant Protein

Uniprot ID: O94979

Synonyms: SEC 31A;AU042160;KIAA0905;SEC31 homolog A (*S. cerevisiae*);MGC93320;SEC31 related protein A;Protein transport protein Sec31A;ABP125;1810024J13Rik;DKFZp686N07171;SEC31 like protein 1;MGC90305;SEC31 like 1;HSPC334;HSPC275;SEC31L1;VAP1;Yeast Sec31p homolog;ABP130; Web1 like protein

Research Background

WD-repeats are motifs that are found in a variety of proteins and are characterized by a conserved core of 40-60 amino acids that commonly form a tertiary propeller structure. While proteins that contain WD-repeats participate in a wide range of cellular functions, they are generally involved in regulatory mechanisms concerning chromatin assembly, cell cycle control, signal transduction, RNA processing, apoptosis and vesicular trafficking. Sec31A, also known as ABP125, ABP130 or SEC31L1, is a 1,220 amino acid protein that contains seven WD repeats and localizes to the cytoplasm and to cytoplasmic vesicles, as well as to the membrane of the endoplasmic reticulum (ER). Expressed ubiquitously at high levels, Sec31A functions as a component of the COP II (coat protein II) complex and, working in tandem with other proteins, promotes the formation of ER transport vesicles and aids in the selection of cargo molecules. Chromosomal aberrations that involve the Sec31A gene are associated with inflammatory myofibroblastic tumors (IMTs), suggesting a role for Sec31A in carcinogenesis. Multiple isoforms of Sec31A exist due to alternative splicing events.

Inhibitor · Natural Compounds · Compound Libraries · Recombinant Proteins

This product is for Research Use Only · Not for Human or Veterinary or Therapeutic Use

Tel: 781-999-4286 E_mail: info@targetmol.com Address: 34 Washington Street, Wellesley Hills, MA 02481