

Anti-SEC23 Antibody (4Q432)

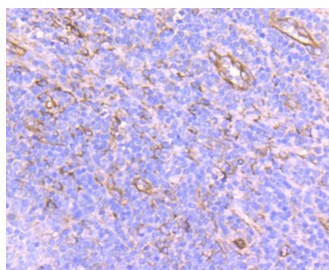
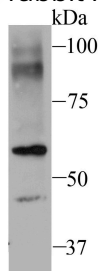
Product Details

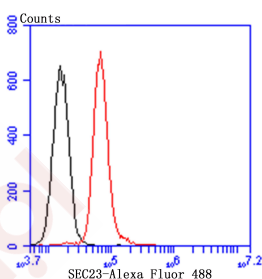
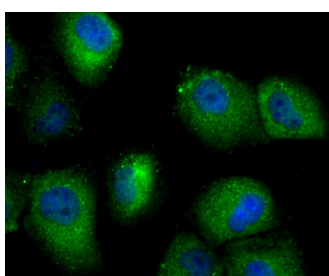
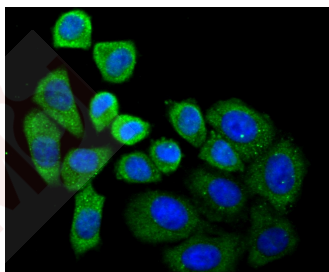
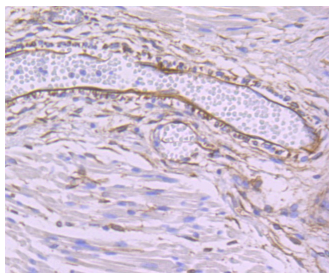
Ig Type:	IgG
Reactivity:	Human,Mouse
Conjugation:	Unconjugated
Molecular Weight:	Theoretical: 86/63 kDa.
Clone:	4Q432
Purification:	ProA affinity purified

Applications

Verified Activity:

1. Western blot analysis of SEC23 on NIH-3T3 cell using anti-SEC23 antibody at 1/500 dilution.
2. Immunohistochemical analysis of paraffin-embedded human tonsil tissue using anti-SEC23 antibody. Counter stained with hematoxylin.
3. Immunohistochemical analysis of paraffin-embedded human fetal skeletal muscle tissue using anti-SEC23 antibody. Counter stained with hematoxylin.
4. ICC staining SEC23 in HepG2 cells (green). The nuclear counter stain is DAPI (blue). Cells were fixed in paraformaldehyde, permeabilised with 0.25% Triton X100/PBS.
5. ICC staining SEC23 in HUVEC cells (green). The nuclear counter stain is DAPI (blue). Cells were fixed in paraformaldehyde, permeabilised with 0.25% Triton X100/PBS.
6. Flow cytometric analysis of HepG2 cells with SEC23 antibody at 1/100 dilution (red) compared with an unlabelled control (cells without incubation with primary antibody; black). Goat anti rabbit IgG (FITC) was used as the secondary antibody.





Application: FCM, ICC, IHC, WB

Recommended WB: 1:500-1000; IHC: 1:50-200; ICC: 1:50-200; FCM: 1:50-100

Properties

Stability & Storage: Store at -20°C or -80°C for 12 months. Avoid repeated freeze-thaw cycles.

Shipping: Shipping with blue ice.

Antigen Details

Immunogen: Recombinant Protein

Uniprot ID: Q15436

Synonyms: SC23A_HUMAN; Protein transport protein Sec23A; SEC 23; sec23a; CLSD; SEC23-related protein A; Sec23 homolog A (*S. cerevisiae*)

Research Background

Component of the coat protein complex II (COPII) which promotes the formation of transport vesicles from the endoplasmic reticulum (ER). The coat has two main functions, the physical deformation of the endoplasmic reticulum membrane into vesicles and the selection of cargo molecules for their transport to the Golgi complex.

Inhibitor · Natural Compounds · Compound Libraries · Recombinant Proteins

This product is for Research Use Only · Not for Human or Veterinary or Therapeutic Use

Tel:781-999-4286 E_mail:info@targetmol.com Address:34 Washington Street,Wellesley Hills,MA 02481