

Anti-SDHB Antibody (31144)

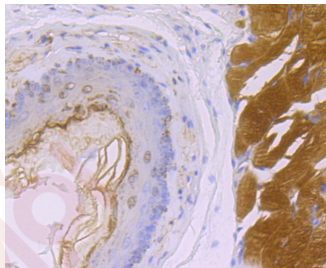
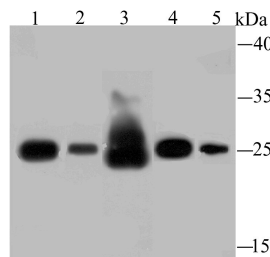
Product Details

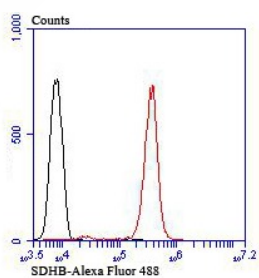
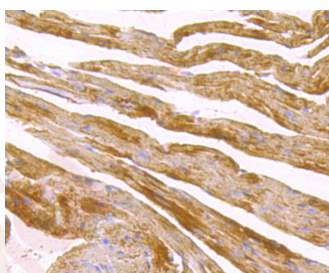
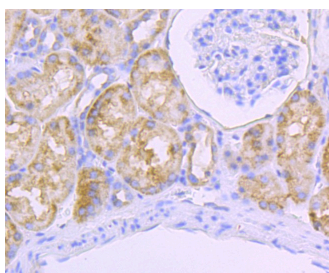
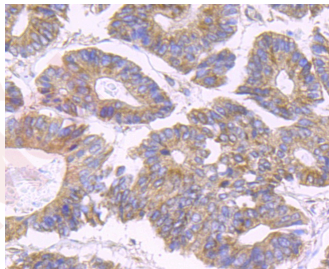
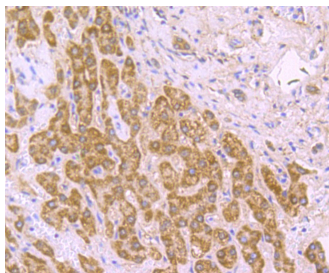
Ig Type:	IgG
Reactivity:	Human,Mouse,Rat
Conjugation:	Unconjugated
Molecular Weight:	Theoretical: 32 kDa.
Clone:	31144
Purification:	ProA affinity purified

Applications

Verified Activity:

1. Western blot analysis of SDHB on different lysates using anti-SDHB antibody at 1/500 dilution. Positive control: Lane 1: Human liver, Lane 2: Rat spleen, Lane 3: Rat liver, Lane 4: Mouse spleen, Lane 5: HepG2.
2. Immunohistochemical analysis of paraffin-embedded rat esophagus tissue using anti-SDHB antibody. Counter stained with hematoxylin.
3. Immunohistochemical analysis of paraffin-embedded human liver tissue using anti-SDHB antibody. Counter stained with hematoxylin.
4. Immunohistochemical analysis of paraffin-embedded human colon cancer tissue using anti-SDHB antibody. Counter stained with hematoxylin.
5. Immunohistochemical analysis of paraffin-embedded human kidney tissue using anti-SDHB antibody. Counter stained with hematoxylin.
6. Immunohistochemical analysis of paraffin-embedded mouse heart tissue using anti-SDHB antibody. Counter stained with hematoxylin.
7. Flow cytometric analysis of Jurkat cells with SDHB antibody at 1/100 dilution (red) compared with an unlabelled control (cells without incubation with primary antibody; black). Alexa Fluor 488-conjugated goat anti-rabbit IgG was used as the secondary antibody.





Application: FCM,IHC,IP,WB

Recommended WB: 1:500-2000; IHC: 1:50-200; IP: 1:10-50; FCM: 1:50-100

Properties

Stability & Storage: Store at -20°C or -80°C for 12 months. Avoid repeated freeze-thaw cycles.

Shipping: Shipping with blue ice.

Antigen Details

Immunogen:	Recombinant Protein
Uniprot ID:	P21912
Synonyms:	mitochondrial;Succinate dehydrogenase [ubiquinone] iron-sulfur subunit;SDH;lp;EC 1.3.5.1;SDH1;Iron-sulfur subunit of complex II

Research Background

In aerobic respiration reactions, succinate dehydrogenase (SDH) catalyzes the oxidation of succinate and ubiquinone to fumarate and ubiquinol. Four subunits comprise the SDH protein complex: a flavochrome subunit (SDHA), an iron-sulfur protein (SDHB) and two membrane-bound subunits (SDHC and SDHD) anchored to the inner mitochondrial membrane. Mutations to these subunits cause mitochondrial dysfunction, corresponding to several distinct disorders. Mutations in the membrane bound components may cause hereditary paraganglioma, while SDHA mutations associate with juvenile encephalopathy as well as Leigh syndrome, a severe neurological disorder. Inactivating mutations in SDHB correlate with inherited, but not necessarily sporadic, cases of pheochromocytoma.

[Inhibitor](#) · [Natural Compounds](#) · [Compound Libraries](#) · [Recombinant Proteins](#)

This product is for Research Use Only · Not for Human or Veterinary or Therapeutic Use

Tel:781-999-4286 E_mail:info@targetmol.com Address:34 Washington Street,Wellesley Hills,MA 02481