

Anti-SDF-1/CXCL12 Antibody (6G646)

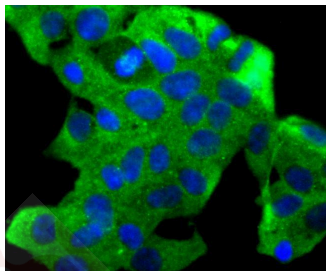
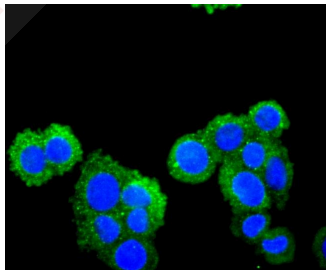
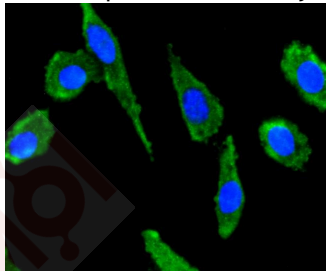
Product Details

Ig Type:	IgG
Reactivity:	Human
Conjugation:	Unconjugated
Molecular Weight:	Theoretical: 11 kDa.
Clone:	6G646
Purification:	ProA affinity purified

Applications

Verified Activity:

1. ICC staining SDF1 in SH-SY-5Y cells (green). The nuclear counter stain is DAPI (blue). Cells were fixed in paraformaldehyde, permeabilised with 0.25% Triton X100/PBS.
2. ICC staining SDF1 in SW480 cells (green). The nuclear counter stain is DAPI (blue). Cells were fixed in paraformaldehyde, permeabilised with 0.25% Triton X100/PBS.
3. ICC staining SDF1 in 293 cells (green). The nuclear counter stain is DAPI (blue). Cells were fixed in paraformaldehyde, permeabilised with 0.25% Triton X100/PBS.



Application:	ICC/IF,WB
Recommended	WB: 1:1000-2000; ICC/IF: 1:50-200

A DRUG SCREENING EXPERT

Properties

Stability & Storage: Store at -20°C or -80°C for 12 months. Avoid repeated freeze-thaw cycles.

Shipping: Shipping with blue ice.

Antigen Details

Immunogen: Recombinant Protein

Uniprot ID: P48061

Synonyms: PBSF;SDF-1;TPAR1;TLSF;chemokine (C-X-C motif) ligand 12;IRH;SDF1;SCYB12

Research Background

The stromal cell derived factor 1 (SDF1, CXCL12) is a small, pro-inflammatory chemoattractant cytokine that regulates leukocyte trafficking through interactions with its cognate 7-transmembrane G protein-coupled receptors. The SDF1 receptor, CXCR4, also serves as a coreceptor for the entry of human immunodeficiency virus into target cells. SDF1 may regulate homing and maintenance of CXCR4-expressing stem or progenitor cells, including embryonic and many somatic stem cells. Many cancer cells express CXCR4, suggesting that SDF1 plays a role in cancer metastasis. Alternative splicing and differential processing during maturation produce a pair of SDF1 isoforms (SDF1 α and SDF1 β) that have different properties and biological activities. Additional isoforms of SDF1 have been reported.

Inhibitor · Natural Compounds · Compound Libraries · Recombinant Proteins

This product is for Research Use Only · Not for Human or Veterinary or Therapeutic Use

Tel:781-999-4286 E_mail:info@targetmol.com Address:34 Washington Street,Wellesley Hills,MA 02481
