

Anti-Mammaglobin-A/SCGB2A2 Antibody (6Q916)

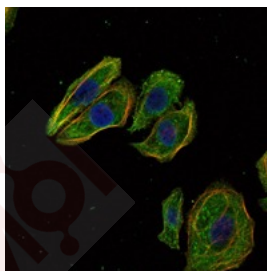
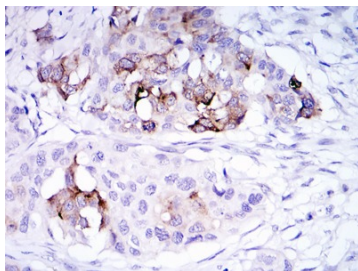
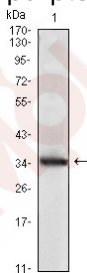
Product Details

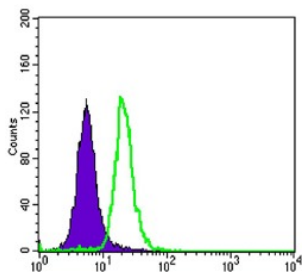
Reactivity:	Human
Conjugation:	Unconjugated
Molecular Weight:	Theoretical: 11 kDa.
Clone:	6Q916
Purification:	ProA affinity purified

Applications

Verified Activity:

1. Western blot analysis of Mammaglobin A on human Mammaglobin A recombinant protein using anti- Mammaglobin A antibody at 1/1,000 dilution.
2. Immunohistochemical analysis of paraffin-embedded human mammary cancer tissue using anti- Mammaglobin A antibody. Counter stained with hematoxylin.
3. ICC staining Mammaglobin A (green) and actin filaments (red) in Hela cells. The nuclear counter stain is DAPI (blue). Cells were fixed in paraformaldehyde, permeabilised with 0.25% Triton X100/PBS.
4. Flow cytometric analysis of SK-BR-3 cells with Mammaglobin A antibody at 1/100 dilution (green) compared with an unlabelled control (cells without incubation with primary antibody; purple).





Application: FCM,ICC,IHC,WB

Recommended WB: 1:500-1000; IHC: 1:50-200; ICC: 1:50-200; FCM: 1:100-200

Properties

Stability & Storage: Store at -20°C or -80°C for 12 months. Avoid repeated freeze-thaw cycles.

Shipping: Shipping with blue ice.

Antigen Details

Immunogen: Recombinant Protein

Uniprot ID: Q13296

Synonyms: MGB1;UGB2;Mammaglobin-1;Mammaglobin-A;Secretoglobin family 2A member 2;SCGB2A2

Research Background

Secretoglobins (also called lipophilins or mammaglobins) are small secreted proteins of endocrine-responsive organs and mucosal epithelia that form multimeric complexes and correlate with the development of various human cancers. Lipophilin A and Lipophilin B are orthologs of prostatein (estramustine-binding protein), the major secretory glycoprotein of the rat ventral prostate gland. Lipophilin A, also designated LIPA, LPHA and secretoglobin, family 1D, member 1 (SCGB1D1), is a component of a heterodimeric molecule present in human tears. Lipophilin B, also designated LIPB, LPHB and secretoglobin, family 1D, member 2 (SCGB1D2), mRNA can be overexpressed in breast tumors and shows a high degree of correlation with the mRNA expression profile of mammaglobin. Histological detection in breast tissue of Mammaglobin A, also designated MGB1 and secretoglobin, family 2A, member 2 (SCGB2A2) and Mammaglobin B (also designated MGB2, lipophilin C, LPHC, UGB3 and SCGB2A2) is a reliable diagnostic marker for breast tumors.

Inhibitor · Natural Compounds · Compound Libraries · Recombinant Proteins

This product is for Research Use Only · Not for Human or Veterinary or Therapeutic Use

Tel:781-999-4286 E_mail:info@targetmol.com Address:34 Washington Street,Wellesley Hills,MA 02481