

## Anti-Uteroglobin Antibody (7Q840)

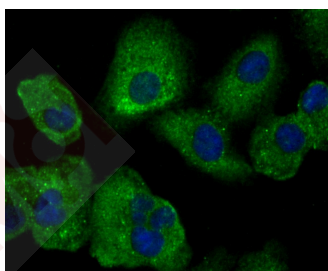
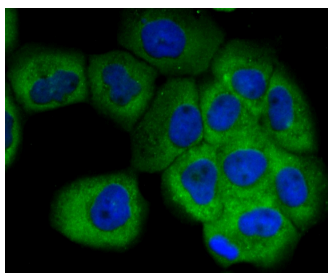
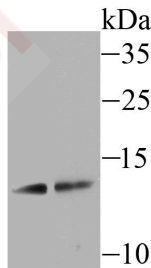
### Product Details

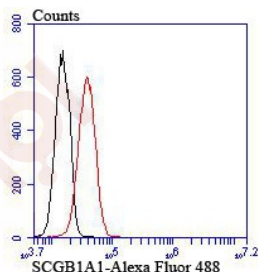
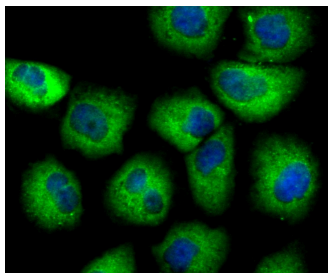
Ig Type:	IgG
Reactivity:	Human,Mouse,Rat
Conjugation:	Unconjugated
Molecular Weight:	Theoretical: 10 kDa.
Clone:	7Q840
Purification:	ProA affinity purified

### Applications

#### Verified Activity:

1. Western blot analysis of SCGB1A1 on mouse lung tissue (1) and A549 cell (2) lysate using anti-SCGB1A1 antibody at 1/500 dilution.
2. ICC staining SCGB1A1 in A431 cells (green). The nuclear counter stain is DAPI (blue). Cells were fixed in paraformaldehyde, permeabilised with 0.25% Triton X100/PBS.
3. ICC staining SCGB1A1 in A549 cells (green). The nuclear counter stain is DAPI (blue). Cells were fixed in paraformaldehyde, permeabilised with 0.25% Triton X100/PBS.
4. ICC staining SCGB1A1 in HUVEC cells (green). The nuclear counter stain is DAPI (blue). Cells were fixed in paraformaldehyde, permeabilised with 0.25% Triton X100/PBS.
5. Flow cytometric analysis of A549 cells with SCGB1A1 antibody at 1/100 dilution (red) compared with an unlabelled control (cells without incubation with primary antibody; black).





Application: FCM, ICC, WB

Recommended WB: 1:500-1000; ICC: 1:50-200; FCM: 1:50-100

## Properties

Stability & Storage: Store at -20°C or -80°C for 12 months. Avoid repeated freeze-thaw cycles.

Shipping: Shipping with blue ice.

## Antigen Details

Immunogen: Recombinant Protein

Uniprot ID: P11684

Synonyms: UP-1; SCGB1A1

## Research Background

SCGB1A1 also named CC10. Clara cell 10 (CC10) protein, a homologue of rabbit uteroglobin, is a phospholipase A2 inhibitor. CC10 is regulated by AP-1, octamer, and hepatocyte nuclear factor-3 (HNF-3) family transcription factors. CC10 expression changes in relation to the ovarian menstrual cycle, and expression in human endometrium may be stimulated by progesterone, suggesting that CC10 may regulate eicosanoid levels in the human uterus. CC10 is expressed in nonciliated airway epithelial cells in the lung and in urogenital secretions. CC10 is involved in modulating inflammation in airway passages and may play a role in asthma. Overexpression of CC10 in the non-small cell lung cancer cell line A549 was shown to result in the near absence of MMP-2 and MMP-9 matrix metalloproteinases and a reduction in invasiveness, indicating that loss of CC10 may contribute to carcinogenesis.

**Inhibitor · Natural Compounds · Compound Libraries · Recombinant Proteins**

This product is for Research Use Only · Not for Human or Veterinary or Therapeutic Use

Tel: 781-999-4286 E\_mail: info@targetmol.com Address: 34 Washington Street, Wellesley Hills, MA 02481