

Anti-SCF Antibody (9H58)

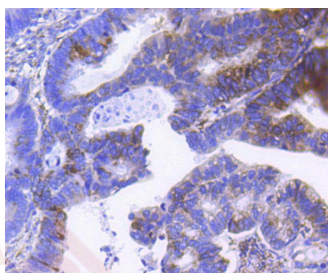
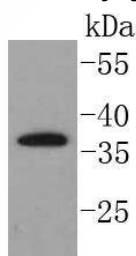
Product Details

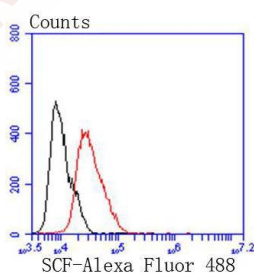
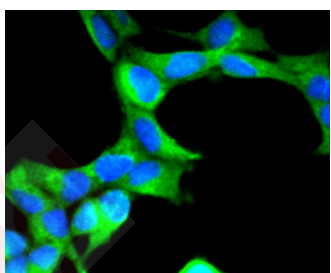
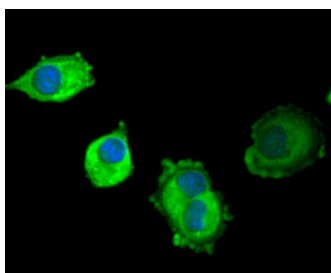
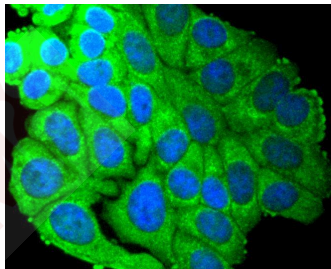
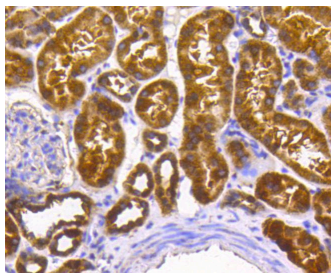
Ig Type:	IgG
Reactivity:	Human
Conjugation:	Unconjugated
Molecular Weight:	Theoretical: 37 kDa.
Clone:	9H58
Purification:	ProA affinity purified

Applications

Verified Activity:

1. Western blot analysis of SCF on Raji cells lysates using anti-SCF antibody at 1/1,000 dilution.
2. Immunohistochemical analysis of paraffin-embedded human colon cancer tissue using anti-SCF antibody. Counter stained with hematoxylin.
3. Immunohistochemical analysis of paraffin-embedded human kidney tissue using anti-SCF antibody. Counter stained with hematoxylin.
4. ICC staining SCF in HepG2 cells (green). The nuclear counter stain is DAPI (blue). Cells were fixed in paraformaldehyde, permeabilised with 0.25% Triton X100/PBS.
5. ICC staining SCF in PANC-1 cells (green). The nuclear counter stain is DAPI (blue). Cells were fixed in paraformaldehyde, permeabilised with 0.25% Triton X100/PBS.
6. ICC staining SCF in 293 cells (green). The nuclear counter stain is DAPI (blue). Cells were fixed in paraformaldehyde, permeabilised with 0.25% Triton X100/PBS.
7. Flow cytometric analysis of MCF-7 cells with SCF antibody at 1/50 dilution (red) compared with an unlabelled control (cells without incubation with primary antibody; black). Alexa Fluor 488-conjugated goat anti rabbit IgG was used as the secondary antibody.





Application: FCM, ICC/IF, IHC, WB

Recommended WB: 1:1000-2000; IHC: 1:100-500; ICC/IF: 1:50-200; FCM: 1:50-100

Properties

Stability & Storage: Store at -20°C or -80°C for 12 months. Avoid repeated freeze-thaw cycles.

Shipping: Shipping with blue ice.

Antigen Details

Immunogen: Recombinant Protein
Uniprot ID: P21583
Synonyms: Kit ligand; Mast cell growth factor; c-Kit ligand; Stem cell factor

Research Background

Stem cell factor (SCF) is the ligand for the transmembrane tyrosine kinase receptor proto-oncogene c-Kit. SCF, also designated KL, MGF and SLF, is a pleiotropic cytokine that has two alternatively spliced forms, 248 and 220 amino acids in length in human and mouse systems, respectively. Both the larger form and the smaller form are cleaved to produce soluble forms. The smaller splice variant lacks the proteolytic cleavage site, between amino acids 149 and 177 of the larger SCF form. The larger form of SCF is expressed in fibroblasts, brain and thymus, while the smaller form is found in spleen, testis, placenta and cerebellum. The SCF ligand is essential for the development of germ cells, hematopoietic progenitor cells and melanocyte precursors. SCF can stimulate the proliferation of mature mast cells as well as the maturation and proliferation of immature mast cells.

Inhibitor · Natural Compounds · Compound Libraries · Recombinant Proteins

This product is for Research Use Only · Not for Human or Veterinary or Therapeutic Use

Tel: 781-999-4286 E_mail: info@targetmol.com Address: 34 Washington Street, Wellesley Hills, MA 02481