

Anti-SCAI Antibody (9G836)

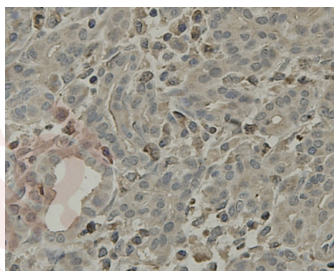
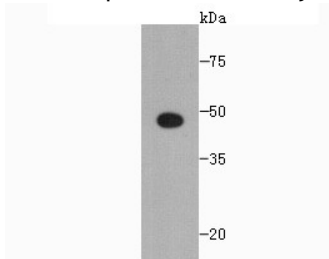
Product Details

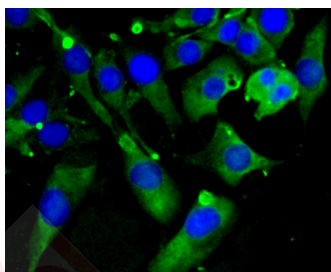
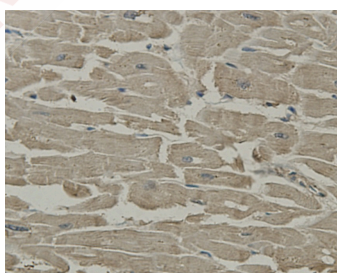
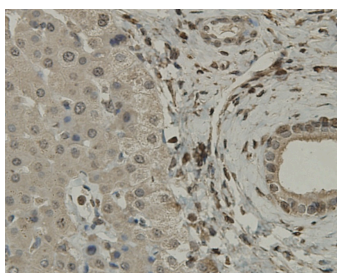
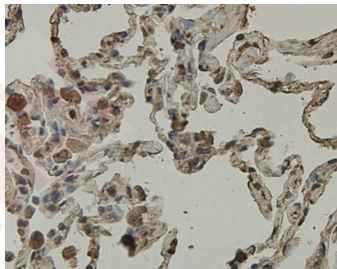
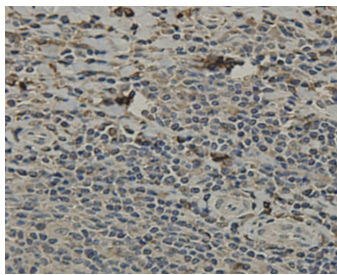
Reactivity:	Human
Conjugation:	Unconjugated
Molecular Weight:	Theoretical: 48 kDa.
Clone:	9G836

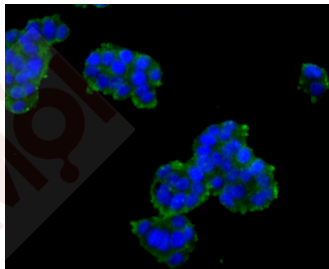
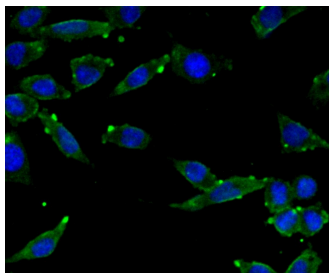
Applications

Verified Activity:

1. Western blot analysis of SCAI on Recombinant protein using anti-SCAI antibody at 1/1,000 dilution.
2. Immunohistochemical analysis of paraffin-embedded human pancreas tissue using anti-SCAI antibody. Counter stained with hematoxylin.
3. Immunohistochemical analysis of paraffin-embedded human tonsil tissue using anti-SCAI antibody. Counter stained with hematoxylin.
4. Immunohistochemical analysis of paraffin-embedded human lung tissue using anti-SCAI antibody. Counter stained with hematoxylin.
5. Immunohistochemical analysis of paraffin-embedded human liver tissue using anti-SCAI antibody. Counter stained with hematoxylin.
6. Immunohistochemical analysis of paraffin-embedded human brain tissue using anti-SCAI antibody. Counter stained with hematoxylin.
7. Immunohistochemical analysis of paraffin-embedded human heart tissue using anti-SCAI antibody. Counter stained with hematoxylin.
8. ICC staining SCAI in SHG-44 cells (green). The nuclear counter stain is DAPI (blue). Cells were fixed in paraformaldehyde, permeabilised with 0.25% Triton X100/PBS.
9. ICC staining SCAI in SH-SY-5Y cells (green). The nuclear counter stain is DAPI (blue). Cells were fixed in paraformaldehyde, permeabilised with 0.25% Triton X100/PBS.
10. ICC staining SCAI in PC-12 cells (green). The nuclear counter stain is DAPI (blue). Cells were fixed in paraformaldehyde, permeabilised with 0.25% Triton X100/PBS.







Application: ICC,IHC,WB

Recommended WB: 1:1000-2000; IHC: 1:50-200; ICC: 1:50-200

Properties

Stability & Storage: Store at -20°C or -80°C for 12 months. Avoid repeated freeze-thaw cycles.

Shipping: Shipping with blue ice.

Antigen Details

Immunogen: Recombinant Protein

Uniprot ID: Q8N9R8

Synonyms: MGC120525;MGC120526;Suppressor of cancer cell invasion;MGC120528;Protein SCAI;FLJ36664;SCAI_HUMAN;C9orf126;NET40;SCAI;Suppressor of cancer cell invasion protein;FLJ11758

Research Background

Protein SCAI, also known as Suppressor of cancer cell invasion protein, and encoded by the gene name SCAI, is a tumor suppressor that suppresses MKL1-induced SRF transcriptional activity. It is a regulator of cell migration and appears to be involved in the RhoA (ras homolog gene family, member A)-Dia1 (diaphanous homolog 1) signal transduction pathway. SCAI localizes in the nucleus, where it binds and inhibits the myocardin-related transcription factor MAL by forming a ternary complex with serum response factor (SRF).

Inhibitor · Natural Compounds · Compound Libraries · Recombinant Proteins

This product is for Research Use Only · Not for Human or Veterinary or Therapeutic Use

Tel:781-999-4286 E_mail:info@targetmol.com Address:34 Washington Street,Wellesley Hills,MA 02481