

## Anti-Phospho-JNK2 (Thr183) Polyclonal Antibody

### Product Details

**Ig Type:** IgG

**Reactivity:** Human, Mouse, Rat

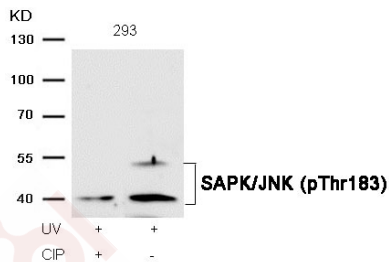
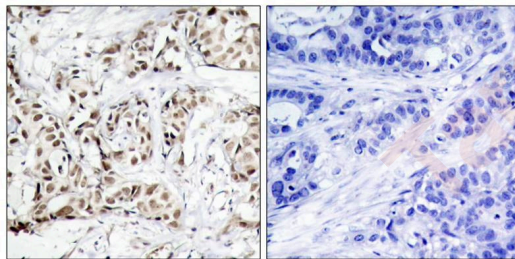
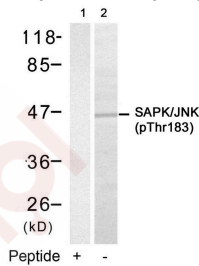
**Conjugation:** Unconjugated

**Purification:** Antibodies were produced by immunizing rabbits with synthetic phosphopeptide and KLH conjugates. Antibodies were purified by affinity-chromatography using epitope-specific phosphopeptide. Non-phospho specific antibodies were removed by chromatography using non-phosphopeptide.

### Applications

**Verified Activity:**

- Western blot analysis of extracts from 293 cells using SAPK/JNK (Phospho-Thr183) Antibody TMAC-03685 (Lane 2) and the same antibody preincubated with blocking peptide (Lane1).
- Immunohistochemical analysis of paraffin-embedded human breast carcinoma tissue using SAPK/JNK (Phospho-Thr183) Antibody TMAC-03685 (left) or the same antibody preincubated with blocking peptide (right).
- Western blot analysis of extracts from 293 cells, treated with UV or calf intestinal phosphatase (CIP), using SAPK/JNK (Phospho-Thr183) Antibody TMAC-03685.



**Application:** IHC, WB

## A DRUG SCREENING EXPERT

---

### Properties

**Stability & Storage:** Store at 2°C-8°C for 1 month. Store at -20°C or -80°C for 12 months. Avoid repeated freeze-thaw cycles.

**Shipping:** Shipping with blue ice.

---

### Antigen Details

**Immunogen:** Peptide sequence around phosphorylation site of threonine 183 (M-M-T(p)-P-Y) derived from Human SAPK/JNK

**Antigen Species:** Human

**Uniprot ID:** P45984

**Synonyms:** JNK2 (p-T183);p-JNK2 (T183);p-JNK2 (Thr183);JNK2 (p-Thr183)

---

### Research Background

Responds to activation by environmental stress and pro-inflammatory cytokines by phosphorylating a number of transcription factors, primarily components of AP-1 such as c-Jun and ATF2 and thus regulates AP-1 transcriptional activity. In T-cells, JNK1 and JNK2 are required for polarized differentiation of T-helper cells into Th1 cells.

**Inhibitor · Natural Compounds · Compound Libraries · Recombinant Proteins**

This product is for Research Use Only · Not for Human or Veterinary or Therapeutic Use

Tel:781-999-4286 E\_mail:info@targetmol.com Address:34 Washington Street,Wellesley Hills,MA 02481