

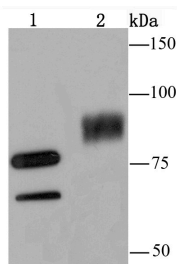
## Anti-SAE2/UBA2 Antibody (3140)

## Product Details

Ig Type:	IgG
Reactivity:	Human,Mouse,Rat
Conjugation:	Unconjugated
Molecular Weight:	Theoretical: 71 kDa.
Clone:	3140
Purification:	ProA affinity purified

## Applications

Verified Activity: 1. Western blot analysis of SAE2/UBA2 on A549 (1) and PC-12 (2) cell lysate using anti-SAE2/UBA2 antibody at 1/500 dilution.



Application:	IP,WB
Recommended	WB: 1:500; IP: 1:10-50

## Properties

Stability & Storage:	Store at -20°C or -80°C for 12 months. Avoid repeated freeze-thaw cycles.
Shipping:	Shipping with blue ice.

## Antigen Details

Immunogen:	Recombinant Protein
Uniprot ID:	Q9UBT2
Synonyms:	SUMO 1 activating enzyme subunit 2;SAE2;SAE2_HUMAN;SAE 2;Ubiquitin-like 1-activating enzyme E1B;Ubiquitin like 1 activating enzyme E1B;UBA2 ubiquitin activating enzyme E1 homolog;UBLE1B;Anthracycline-associated resistance ARX;ARX;SUMO-activating enzyme subunit 2;Ubiquitin like modifier activating enzyme 2;Anthracycline associated resistance ARX;SUMO activating enzyme subunit 2;FLJ13058;UBA 2;UBA2;HRIHFB2115

## Research Background

The small ubiquitin-related modifier protein SUMO-1 belongs to the ubiquitin-like protein family, which are synthesized as precursor proteins that undergo processing before conjugation to target proteins. However, SUMO and ubiquitin differ with respect to targeting. Ubiquitination predominantly targets proteins for degradation, whereas sumoylation targets proteins to a variety of cellular processes, including nuclear transport, transcriptional regulation, apoptosis, and protein stability. SUMO-1 utilizes homologues of the E1 and E2 enzymes for conjugation

## A DRUG SCREENING EXPERT

---

to proteins, which include I $\kappa$ B $\alpha$ , MDM2, p53, PML, and RanGap1. AOS1 is homologous to the N-terminal half of E1 and UBA2 is homologous to the C-terminal half of E1. These proteins form a heterodimer that activates SUMO-1.

**Inhibitor · Natural Compounds · Compound Libraries · Recombinant Proteins**

This product is for Research Use Only · Not for Human or Veterinary or Therapeutic Use

Tel:781-999-4286 E\_mail:info@targetmol.com Address:34 Washington Street,Wellesley Hills,MA 02481