

Anti-SAE1 Antibody (4G581)

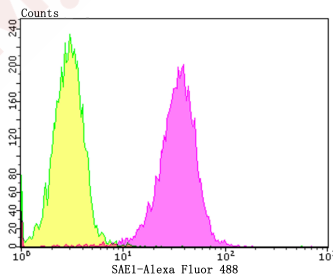
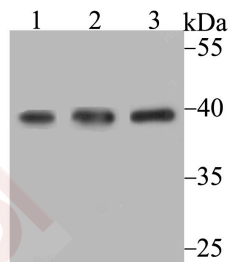
Product Details

Ig Type:	IgG
Reactivity:	Human
Conjugation:	Unconjugated
Molecular Weight:	Theoretical: 38 kDa.
Clone:	4G581
Purification:	ProA affinity purified

Applications

1. Western blot analysis of SAE1 on different cell lysates using anti-SAE1 antibody at 1/1,000 dilution. Positive control: Lane 1: SiHa, Lane 2: K562, Lane 3: 293.
2. Flow cytometric analysis of A549 cells with SAE1 antibody at 1/100 dilution (yellow) compared with an unlabelled control (cells without incubation with primary antibody; purple). Alexa Fluor 488-conjugated goat anti-rabbit IgG was used as the secondary antibody.

Verified Activity:



Application:	FCM,WB
Recommended	WB: 1:500-2000; FCM: 1:50-100

Properties

- Stability & Storage: Store at -20°C or -80°C for 12 months. Avoid repeated freeze-thaw cycles.
- Shipping: Shipping with blue ice.

Antigen Details

Immunogen: Recombinant Protein: human SAE1 aa 150-300
Antigen Species: Human
Uniprot ID: Q9UBE0
Synonyms: AOS1;SUA1;HSPC140;SUMO1 activating enzyme subunit 1;UBLE1A

Research Background

Proteolytic degradation by the ubiquitin (Ub) system is essential for normal cell cycle progression, cellular differentiation and stress responses. Proteins conjugated to Ub are marked for progressive degradation by the 26S Proteasome. AOS-1, also designated SUMO-1-activating enzyme or ubiquitin-like 1-activating enzyme E1A, belongs to the ubiquitin-activating E1 family of proteins and plays an important role in the first step of the UBL1 conjugation pathway. AOS-1, which is a dimeric enzyme, functions as a UBL1 E1 ligase, mediating the ATP-dependent activation of UBL1. AOS-1 can bind with UBLE1A and UBLE1B to form a heterodimer which can bind UBL1.

Inhibitor · Natural Compounds · Compound Libraries · Recombinant Proteins

This product is for Research Use Only · Not for Human or Veterinary or Therapeutic Use

Tel:781-999-4286 E_mail:info@targetmol.com Address:34 Washington Street,Wellesley Hills,MA 02481