

Anti-Phospho-S6 Ribosomal Protein (Ser235, 236) Polyclonal Antibody

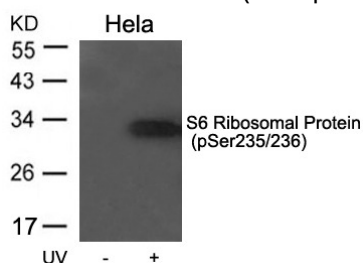
Product Details

Ig Type:	IgG
Reactivity:	Human,Mouse,Rat
Conjugation:	Unconjugated
Purification:	Antibodies were produced by immunizing rabbits with synthetic phosphopeptide and KLH conjugates. Antibodies were purified by affinity-chromatography using epitope-specific phosphopeptide. Non-phospho specific antibodies were removed by chromatography using non-phosphopeptide.

Applications

Verified Activity:

1. Western blot analysis of extracts from HeLa cells untreated or treated with UV using S6 Ribosomal Protein (Phospho-Ser235/236) Antibody TMAC-03679.



Application: WB

Properties

Stability & Storage: Store at 2°C-8°C for 1 month. Store at -20°C or -80°C for 12 months. Avoid repeated freeze-thaw cycles.

Shipping: Shipping with blue ice.

Antigen Details

Immunogen: Peptide sequence around phosphorylation site of serine 235/236 (R-L-S(p)-S(p)-L-R) derived from Human S6 Ribosomal Protein

Antigen Species: Human

Uniprot ID: P62753

Synonyms: S6;S6 Ribosomal Protein (p-Ser235, 236);p-S6 Ribosomal Protein (Ser235, 236);S6 Ribosomal Protein (p-S235, 236);OK/SW-cl.2;Phospho-S6 Ribosomal Protein (S235, 236);p-S6 Ribosomal Protein (S235, 236);eS6

Research Background

May play an important role in controlling cell growth and proliferation through the selective translation of particular classes of mRNA.

Inhibitor · Natural Compounds · Compound Libraries · Recombinant Proteins

This product is for Research Use Only. Not for Human or Veterinary or Therapeutic Use

Tel:781-999-4286 E_mail:info@targetmol.com Address:34 Washington Street,Wellesley Hills,MA 02481