

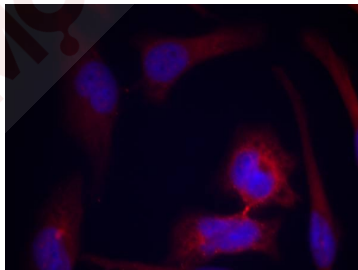
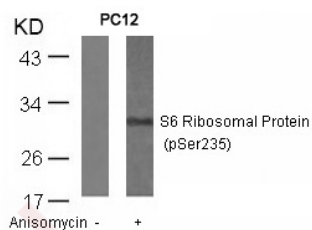
## Anti-Phospho-S6 Ribosomal Protein (Ser235) Polyclonal Antibody

### Product Details

Ig Type:	IgG
Reactivity:	Human,Mouse,Rat
Conjugation:	Unconjugated
Purification:	Antibodies were produced by immunizing rabbits with synthetic phosphopeptide and KLH conjugates. Antibodies were purified by affinity-chromatography using epitope-specific phosphopeptide. Non-phospho specific antibodies were removed by chromatography using non-phosphopeptide.

### Applications

- Verified Activity:
- Western blot analysis of extracts from PC12 cells untreated or treated with anisomycin using S6 Ribosomal Protein (Phospho-Ser235) Antibody TMAC-03678.
  - Immunofluorescence staining of methanol-fixed Hela cells using S6 Ribosomal Protein (Phospho-Ser235) Antibody TMAC-03678.



Application: IF, WB

### Properties

Stability & Storage:	Store at 2°C-8°C for 1 month. Store at -20°C or -80°C for 12 months. Avoid repeated freeze-thaw cycles.
Shipping:	Shipping with blue ice.

### Antigen Details

Immunogen: Peptide sequence around phosphorylation site of serine 235 (R-L-S(p)-S-L) derived from Human S6 Ribosomal Protein

Antigen Species: Human

Uniprot ID: P62753

Synonyms: S6 Ribosomal Protein (p-S235);OK/SW-cl.2;p-S6 Ribosomal Protein (S235);S6 Ribosomal Protein (p-Ser235);eS6;Phospho-S6 Ribosomal Protein (S235);p-S6 Ribosomal Protein (Ser235); S6

---

### Research Background

May play an important role in controlling cell growth and proliferation through the selective translation of particular classes of mRNA.

**Inhibitor · Natural Compounds · Compound Libraries · Recombinant Proteins**

This product is for Research Use Only · Not for Human or Veterinary or Therapeutic Use

Tel:781-999-4286 E\_mail:info@targetmol.com Address:34 Washington Street,Wellesley Hills,MA 02481