

Anti-S100A4 Antibody (9W585)

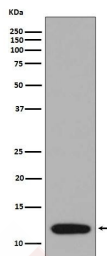
Product Details

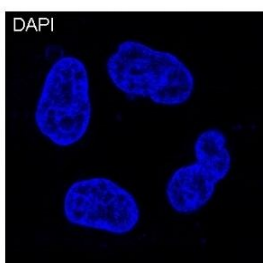
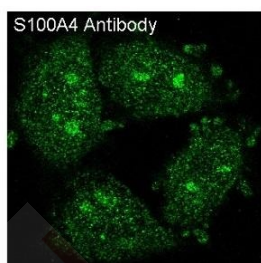
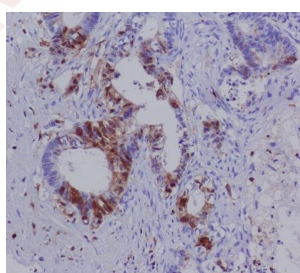
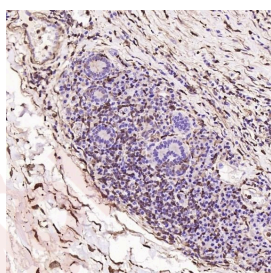
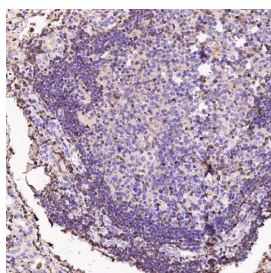
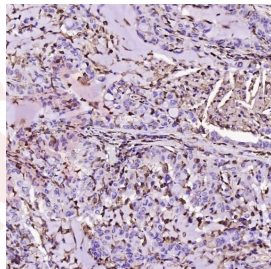
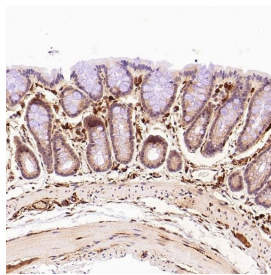
Ig Type:	IgG
Reactivity:	Human,Mouse,Rat
Conjugation:	Unconjugated
Molecular Weight:	Theoretical: 12 kDa.
Clone:	9W585
Purification:	Affinity-chromatography

Applications

Verified Activity:

1. All lanes use the Antibody at 1:2K dilution for 1 hour at room temperature.
2. Western blot analysis of S100A4 expression in A375 cell lysate.
3. Immunohistochemical analysis of paraffin-embedded Rat stomach, using the Antibody at 1:200 dilution.
4. Immunohistochemical analysis of paraffin-embedded Human lung adenocarcinoma, using the Antibody at 1:200 dilution.
5. Immunohistochemical analysis of paraffin-embedded Human thyroid cancer, using the Antibody at 1:200 dilution.
6. Immunohistochemical analysis of paraffin-embedded Human esophageal carcinoma, using the Antibody at 500 dilution.
7. Immunohistochemical analysis of paraffin-embedded human colon carcinoma, using S100A4 Antibody.
8. Immunofluorescent analysis of HeLa cells, using S100A4 Antibody.





Application: FCM, ICC/IF, IHC, IP, WB

Recommended WB: 1:1000-2000 IHC: 1:100-200 ICC/IF: 1:50-200 IP 1:20-50 FCM 1:20-100

Properties

Stability & Storage: Store at 2°C-8°C for 1 month. Store at -20°C or -80°C for 12 months. Avoid repeated freeze-thaw cycles.

Shipping: Shipping with blue ice.

Antigen Details

Immunogen: A synthesized peptide: human S100A4

Antigen Species: Human

Uniprot ID: P26447

Synonyms: PEL98;MTS1;CAPL;S100 calcium binding protein A4;18A2;42A;P9KA

Research Background

The Mts1 gene encodes a small acidic Ca²⁺-binding protein, Mts1 (also designated S100A4, calvasculin or metastasin). Mts1 belongs to the S100 family of small Ca²⁺-binding proteins and is expressed in a cell-specific manner. Mts1 protein is involved in tumor progression and metastasis, and also has a significant stimulatory effect on angiogenesis. The level of Mts1 protein in serum increases with aging, suggesting that Mts1 may play a role in the induction of tumor progression via stimulation of angiogenesis. In addition, Mts1 cooperates with p53 in apoptosis induction by binding to the C-terminal regulatory domain of p53 to inhibit the DNA binding activity of p53. The ability of Mts1 to enhance p53-dependent apoptosis may accelerate the loss of p53 function in tumors. Thus, Mts1 can contribute to the development of a more aggressive phenotype during tumor progression.

Inhibitor · Natural Compounds · Compound Libraries · Recombinant Proteins

This product is for Research Use Only · Not for Human or Veterinary or Therapeutic Use

Tel: 781-999-4286 E_mail: info@targetmol.com Address: 34 Washington Street, Wellesley Hills, MA 02481