

Anti-S100A6 Antibody (9N771)

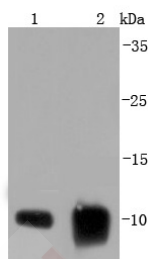
Product Details

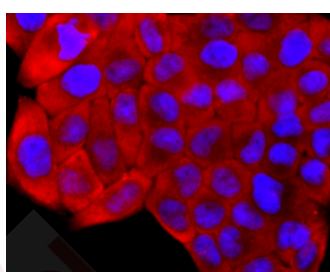
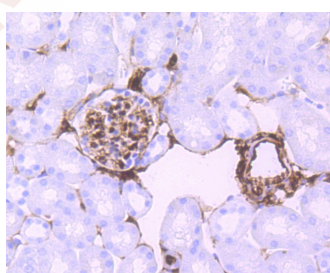
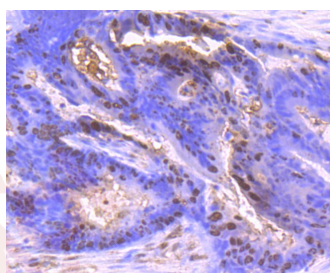
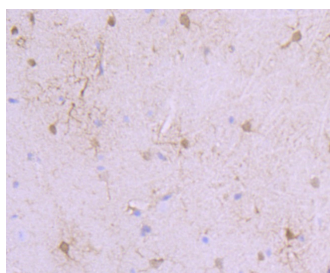
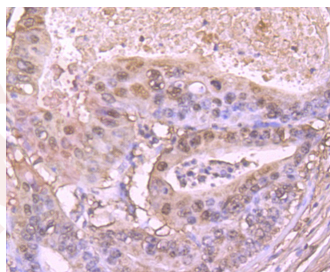
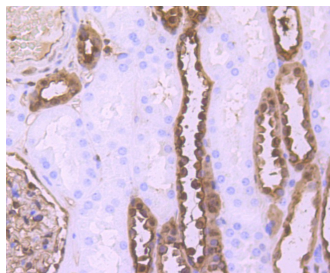
| | |
|-------------------|------------------------|
| Ig Type: | IgG |
| Reactivity: | Human,Mouse,Rat |
| Conjugation: | Unconjugated |
| Molecular Weight: | Theoretical: 10 kDa. |
| Clone: | 9N771 |
| Purification: | ProA affinity purified |

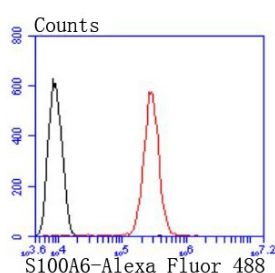
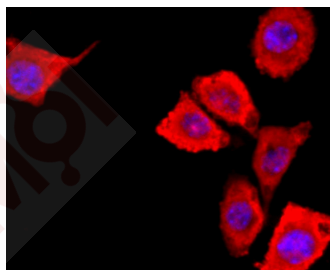
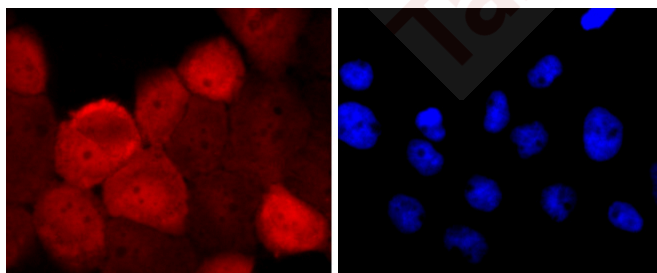
Applications

1. Western blot analysis of S100 alpha 6 on different lysates using anti-S100 alpha 6 antibody at 1/1,000 dilution. Positive control: Lane 1: A431, Lane 2: Mouse lung.
2. Immunohistochemical analysis of paraffin-embedded human kidney tissue using anti-S100 alpha 6 antibody. Counter stained with hematoxylin.
3. Immunohistochemical analysis of paraffin-embedded human gastric carcinoma tissue using anti-S100 alpha 6 antibody. Counter stained with hematoxylin.
4. Immunohistochemical analysis of paraffin-embedded mouse brain tissue using anti-S100 alpha 6 antibody. Counter stained with hematoxylin.
5. Immunohistochemical analysis of paraffin-embedded human colon cancer tissue using anti-S100 alpha 6 antibody. Counter stained with hematoxylin.
6. Immunohistochemical analysis of paraffin-embedded mouse kidney tissue using anti-S100 alpha 6 antibody. Counter stained with hematoxylin.
7. ICC staining S100 alpha 6 in Hela cells (red). The nuclear counter stain is DAPI (blue). Cells were fixed in paraformaldehyde, permeabilised with 0.25% Triton X100/PBS.
8. ICC staining S100 alpha 6 in A431 cells (red). The nuclear counter stain is DAPI (blue). Cells were fixed in paraformaldehyde, permeabilised with 0.25% Triton X100/PBS.
9. ICC staining S100 alpha 6 in SH-SY-5Y cells (red). The nuclear counter stain is DAPI (blue). Cells were fixed in paraformaldehyde, permeabilised with 0.25% Triton X100/PBS.
10. Flow cytometric analysis of SH-SY-5Y cells with S100 alpha 6 antibody at 1/50 dilution (red) compared with an unlabelled control (cells without incubation with primary antibody; black). Alexa Fluor 488-conjugated goat anti rabbit IgG was used as the secondary antibody.

Verified Activity:







Application: FCM,ICC/IF,IHC,IP,WB

Recommended WB: 1:1000-5000; IHC: 1:50-200; ICC/IF: 1:100-500; FCM: 1:50-100

Properties

Stability & Storage: Store at -20°C or -80°C for 12 months. Avoid repeated freeze-thaw cycles.

Shipping: Shipping with blue ice.

Antigen Details

Immunogen: Recombinant Protein

Uniprot ID: P06703

Synonyms: 5B10;S100 calcium binding protein A6;CABP;CACY;2A9;PRA

Research Background

Calcyclin, also known as Prolactin receptor-associated protein (PRA), growth factor-inducible protein 2A9, S-100 calcium-binding protein A6 (S-100A6) or MLN 4, is a homodimeric member of the S-100 calcium-binding protein family whose expression is upregulated in proliferating and differentiating cells. Calcyclin is inducible by growth factors and overexpressed in acute myeloid leukemias. It is expressed in a cell-specific manner in subpopulations of neurons and astrocytes and in epithelial cells and fibroblasts. Calcyclin is a specific target of S-100B protein in vivo. The binding of Calcyclin to S-100B is stabilized by S-100B-bound calcium and zinc. Calcyclin associates with both Annexin XI and CacyBP (calcyclin-binding protein). It functions to activate several processes along the calcium signal transduction pathway including the regulation of cell growth, proliferation, secretion and exocytosis.

Inhibitor · Natural Compounds · Compound Libraries · Recombinant Proteins

This product is for Research Use Only · Not for Human or Veterinary or Therapeutic Use

Tel:781-999-4286 E_mail:info@targetmol.com Address:34 Washington Street,Wellesley Hills,MA 02481