

Anti-Phospho-Ryanodine Receptor 2 (Ser2808) Polyclonal Antibody

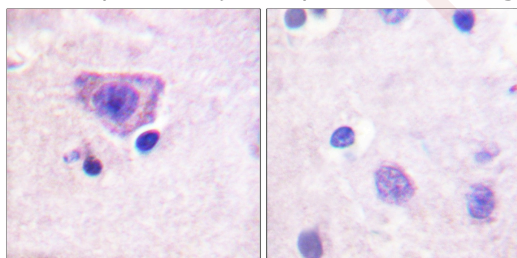
Product Details

Ig Type:	IgG
Reactivity:	Human,Mouse,Rat
Conjugation:	Unconjugated
Molecular Weight:	Theoretical: 564 kDa.
Purification:	The antibody was affinity-purified from rabbit antiserum by affinity-chromatography using epitope-specific immunogen.

Applications

Verified Activity:

1. Immunohistochemistry analysis of paraffin-embedded human brain, using RyR2 (Phospho-Ser2808) Antibody. The picture on the right is blocked with the phospho peptide.



Application:	ELISA,IF,IHC-P
Recommended	IHC-P: 1:100-300; ELISA: 1:10000

Properties

Stability & Storage:	Store at -20°C or -80°C for 12 months. Avoid repeated freeze-thaw cycles.
Shipping:	Shipping with blue ice.

Antigen Details

Immunogen:	A synthesized phosphopeptide: human RyR2 around the phosphorylation site of Ser2808. AA range:2774-2823
Antigen Species:	Human
Uniprot ID:	Q92736
Synonyms:	p-Ryanodine Receptor 2 (S2808);Ryanodine Receptor 2 (p-S2808);Ryanodine Receptor 2 (p-Ser2808);p-Ryanodine Receptor 2 (Ser2808)

Research Background

ryanodine receptor 2(RYR2) Homo sapiens This gene encodes a ryanodine receptor found in cardiac muscle sarcoplasmic reticulum. The encoded protein is one of the components of a calcium channel, composed of a tetramer of the ryanodine receptor proteins and a tetramer of FK506 binding protein 1B proteins, that supplies calcium to cardiac muscle. Mutations in this gene are associated with stress-induced polymorphic ventricular tachycardia and arrhythmogenic right ventricular dysplasia. [provided by RefSeq, Jul 2008],

Inhibitor · Natural Compounds · Compound Libraries · Recombinant Proteins

This product is for Research Use Only · Not for Human or Veterinary or Therapeutic Use

Tel:781-999-4286 E_mail:info@targetmol.com Address:34 Washington Street,Wellesley Hills,MA 02481