

## Anti-Phospho-Ryanodine Receptor 2 (Ser2808) Polyclonal Antibody 2

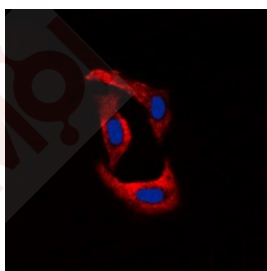
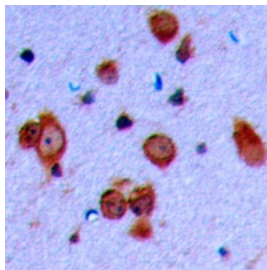
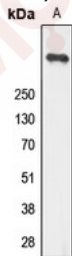
### Product Details

Ig Type:	IgG
Reactivity:	Human,Mouse,Rat
Conjugation:	Unconjugated
Molecular Weight:	Theoretical: 564 kDa.
Purification:	The antibody was purified by immunogen affinity chromatography.

### Applications

#### Verified Activity:

1. Western blot analysis of Ryanodine Receptor 2 (phospho-Ser2808) expression in U251 whole cell lysates.
2. Immunohistochemical analysis of Ryanodine Receptor 2 (phospho-Ser2808) staining in human brain formalin fixed paraffin embedded tissue section. The section was then incubated with the antibody at room temperature and detected using an HRP conjugated compact polymer system. DAB was used as the chromogen. The section was then counterstained with haematoxylin and mounted with DPX.
3. Immunofluorescent analysis of Ryanodine Receptor 2 (phospho-Ser2808) staining in U251 cells. Formalin-fixed cells were permeabilized with 0.1% Triton X-100 in TBS for 5-10 minutes and blocked with 3% BSA-PBS for 30 minutes at room temperature. Cells were probed with the primary antibody in 3% BSA-PBS and incubated overnight at 4 C in a humidified chamber. Cells were washed with PBST and incubated with a DyLight 594-conjugated secondary antibody (red) in PBS at room temperature in the dark. DAPI was used to stain the cell nuclei (blue).



## A DRUG SCREENING EXPERT

---

Application: IF,IHC,WB

Recommended WB: 1:500-1000; IHC: 1:50-100; IF:1:100-300

---

### Properties

Stability & Storage: Store at -20°C or -80°C for 12 months. Avoid repeated freeze-thaw cycles.

Shipping: Shipping with blue ice.

---

### Antigen Details

Immunogen: KLH conjugated synthetic peptide: encompassing a sequence within the center region of human Ryanodine Receptor 2

Antigen Species: Human

Uniprot ID: Q92736

Synonyms: Ryanodine Receptor 2 (p-S2808);p-Ryanodine Receptor 2 (Ser2808);Ryanodine Receptor 2 (p-Ser2808);p-Ryanodine Receptor 2 (S2808)

**Inhibitor · Natural Compounds · Compound Libraries · Recombinant Proteins**

This product is for Research Use Only · Not for Human or Veterinary or Therapeutic Use

Tel:781-999-4286 E\_mail:info@targetmol.com Address:34 Washington Street,Wellesley Hills,MA 02481