

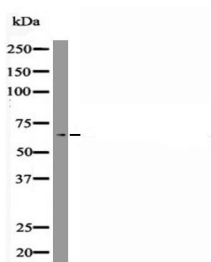
Anti-Phospho-RUNX2 (Ser28) Polyclonal Antibody

Product Details

Ig Type: IgG
Reactivity: Human,Mouse,Rat
Conjugation: Unconjugated
Molecular Weight: Theoretical: 55-62 kDa.

Applications

Verified Activity: 1. Western blot analysis RUNX2 (Phospho-Ser28) using HeLa whole cell lysates.



Application: WB
Recommended WB: 1:1000

Properties

Stability & Storage: Store at -20°C or -80°C for 12 months. Avoid repeated freeze-thaw cycles.
Shipping: Shipping with blue ice.

Antigen Details

Immunogen: A synthesized phosphopeptide: human RUNX2 around the phosphorylation site of Ser28
Antigen Species: Human
Uniprot ID: Q13950
Synonyms: RUNX2 (p-S28);p-RUNX2 (Ser28);p-RUNX2 (S28);RUNX2 (p-Ser28)

Inhibitor · Natural Compounds · Compound Libraries · Recombinant Proteins

This product is for Research Use Only. Not for Human or Veterinary or Therapeutic Use

Tel:781-999-4286 E_mail:info@targetmol.com Address:34 Washington Street,Wellesley Hills,MA 02481