

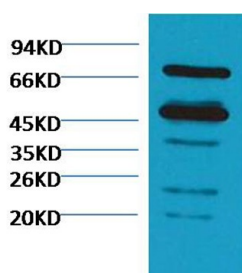
Anti-RuBisCO large subunit Polyclonal Antibody

Product Details

Reactivity:	Plant
Conjugation:	Unconjugated
Molecular Weight:	Actual: 53 kDa.
Purification:	Affinity purification using immunogen.

Applications

Verified Activity: 1. Western blot analysis of Arabidopsis thaliana, using TMAC-03656 diluted at 1:5,000.



Application:	WB
Recommended	WB: 1:3000-5000

Properties

Stability & Storage:	Store at -20°C or -80°C for 12 months. Avoid repeated freeze-thaw cycles.
Shipping:	Shipping with blue ice.

Antigen Details

Synonyms: rbcL; RuBisCO large subunit; Ribulose biphosphate carboxylase large chain

Research Background

Ribulose-1,5-bisphosphate carboxylase oxygenase, commonly known by the abbreviation RuBisCO, is an enzyme involved in the first major step of carbon fixation, a process by which atmospheric carbon dioxide is converted by plants to energy-rich molecules such as glucose.

Inhibitor · Natural Compounds · Compound Libraries · Recombinant Proteins

This product is for Research Use Only. Not for Human or Veterinary or Therapeutic Use

Tel: 781-999-4286 E_mail: info@targetmol.com Address: 34 Washington Street, Wellesley Hills, MA 02481