

Anti-RSK2 Antibody (5C435)

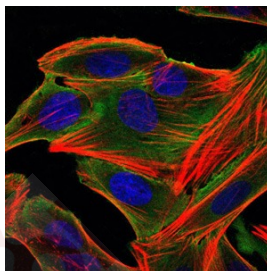
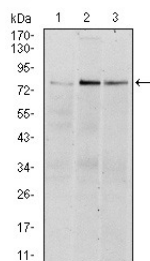
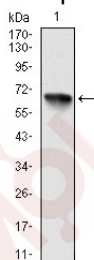
Product Details

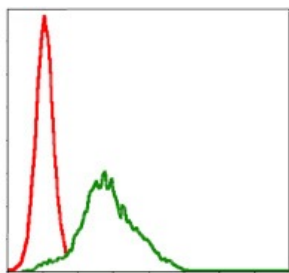
Reactivity:	Human
Conjugation:	Unconjugated
Molecular Weight:	Theoretical: 84 kDa.
Clone:	5C435
Purification:	ProA affinity purified

Applications

Verified Activity:

1. Western blot analysis of RSK2 on human RSK2 recombinant protein using anti-RSK2 antibody at 1/1,000 dilution.
2. Western blot analysis of RSK2 on different cell lysates using anti-RSK2 antibody at 1/1,000 dilution. Positive control: Lane 1: HeLa, Lane 2: MCF-7, Lane 3: HepG2.
3. ICC staining RSK2 (green) and actin filaments (red) in epG2 cells. The nuclear counter stain is DAPI (blue). Cells were fixed in paraformaldehyde, permeabilised with 0.25% Triton X100/PBS.
4. Flow cytometric analysis of HepG2 cells with RSK2 antibody at 1/100 dilution (green) compared with an unlabelled control (cells without incubation with primary antibody; red).





Application: FCM,ICC,WB

Recommended WB: 1:500-1000; ICC: 1:50-200; FCM: 1:100-200

Properties

Stability & Storage: Store at -20°C or -80°C for 12 months. Avoid repeated freeze-thaw cycles.

Shipping: Shipping with blue ice.

Antigen Details

Immunogen: Recombinant Protein

Uniprot ID: P51812

Synonyms: 90 kDa ribosomal protein S6 kinase 3;p90-RSK 3;Insulin stimulated protein kinase 1;MAPKAPK 1b;Ribosomal protein S6 kinase alpha 3;p90 RSK3;OTTHUMP00000023036;HU 3;Rps6ka3;ISPK1; Ribosomal protein S6 kinase 90kDa polypeptide 3;pp90RSK2;S6K-alpha-3;HU2;Insulin-stimulated protein kinase 1;p90RSK3;RSK-2;RSK2;S6 kinase 2;MAPKAP kinase 1b;MAPKAPK-1b; Mental retardation;X linked 19;p90 RSK2;S6K alpha3;CLS;Ribosomal protein s6 kinase ii alpha 2;Ribosomal protein S6 kinase alpha-3;MAPKAPK1B;MAP kinase activated protein kinase 1b; Ribosomal S6 kinase 2;RSK;MAPK activated protein kinase 1b;ISPK-1;MRX19;HU3; KS6A3_HUMAN;MAPK-activated protein kinase 1b;MAP kinase-activated protein kinase 1b

Research Background

The family of ribosomal S6 kinases (Rsk), designated Rsk-1 (or MAPKAP kinase-1), Rsk-2 and Rsk-3, are intracellular serine/threonine kinases that are important signaling intermediates in response to a broad range of ligand activated receptor tyrosine kinases. A unique feature common to the members of the Rsk family is that each possesses two non-identical complete kinase catalytic domains. An additional Rsk protein, Rsk-4, shows a high level of homology to the three previously isolated members of the human Rsk family. Rsk-4 is most abundantly expressed in brain and kidney and plays a role in normal neuronal development. The family of ribosomal S6 kinases includes p70 S6 kinase and p70 S6 kinase b, which are thought to have similar regulatory functions. MSK1 (also designated RLPK) is a novel Rsk-related protein, which, like the p90 Rsk family members, contains two non-identical complete kinase catalytic domains.

Inhibitor · Natural Compounds · Compound Libraries · Recombinant Proteins

This product is for Research Use Only · Not for Human or Veterinary or Therapeutic Use

Tel:781-999-4286 E_mail:info@targetmol.com Address:34 Washington Street,Wellesley Hills,MA 02481