

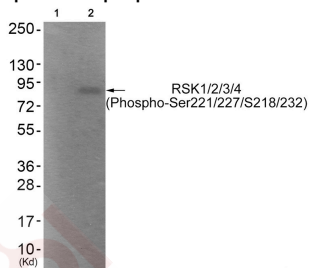
Anti-Phospho-RSK1/2/3/4 (Ser221/227/S218/232) Polyclonal Antibody

Product Details

Ig Type:	IgG
Reactivity:	Human,Mouse
Conjugation:	Unconjugated
Molecular Weight:	Actual: 85 kDa.
Purification:	Antibodies were produced by immunizing rabbits with synthetic phosphopeptide and KLH conjugates. Antibodies were purified by affinity-chromatography using epitope-specific phosphopeptide. Non-phospho specific antibodies were removed by chromatography using non-phosphopeptide.

Applications

Verified Activity: 1. Western blot analysis of extracts from HepG2 cells (Lane 2), using RSK1/2/3/4 (Phospho-Ser221/227/218/232) Antibody TMAC-03649. The lane on the left is treated with antigen-specific peptide.



Application:	WB
Recommended	WB: 1:500-1000

Properties

Stability & Storage:	Store at -20°C or -80°C for 12 months. Avoid repeated freeze-thaw cycles.
Shipping:	Shipping with blue ice.

Antigen Details

Immunogen:	Peptide sequence around phosphorylation site of Serine 221/227/218/232(A-Y-S(p)-F-C) derived from Human RSK1/2/3/4
Antigen Species:	Human
Uniprot ID:	Q15418 & P51812 & Q15349 & Q9UK32
Synonyms:	ribosomal protein S6 kinase;MAP kinase activated protein kinase 1a;MAPKAPK1A;p-RPS6KA1 (Ser221/227/218/232);S6K alpha 1;RSK1p90;polypeptide 1;Ribosomal protein S6 kinase 90kD polypeptide 1;RPS6K1 alpha;pp90RSK1;p90S6K;RSK 1;dj590P13.1;MAPKAPK-1a;RPS6KA1 (p-Ser221/227/218/232);S6K-alpha-1;EC 2.7.11.1;MAPKAP kinase 1a;p90 RSK1;Ribosomal protein S6 kinase alpha 1;KS6A1_HUMAN;Ribosomal S6 kinase 1;Mitogen-activated protein kinase-activated protein kinase 1A;p-RPS6KA1 (S221/227/218/232);RPS6KA1 (p-S221/227/218/232);RSK1;90 kDa ribosomal protein S6 kinase 1;MGC79981;rps6ka;HU1;RSK;p90RSK1;Phospho-

RPS6KA1 (S221/227/218/232);OTTHUMP00000004113;HU 1;Ribosomal protein S6 kinase polypeptide 1;RSK 1 p90;90kD

Research Background

This gene encodes a member of the RSK (ribosomal S6 kinase) family of serine/threonine kinases. This kinase contains 2 nonidentical kinase catalytic domains and phosphorylates various substrates, including members of the mitogen-activated kinase (MAPK) signalling pathway. The activity of this protein has been implicated in controlling cell growth and differentiation. Alternate transcriptional splice variants, encoding different isoforms, have been characterized. This gene encodes a member of the RSK (ribosomal S6 kinase) family of serine/threonine kinases. This kinase contains 2 non-identical kinase catalytic domains and phosphorylates various substrates, including members of the mitogen-activated kinase (MAPK) signalling pathway.

Inhibitor · Natural Compounds · Compound Libraries · Recombinant Proteins

This product is for Research Use Only · Not for Human or Veterinary or Therapeutic Use

Tel:781-999-4286 E_mail:info@targetmol.com Address:34 Washington Street,Wellesley Hills,MA 02481