

Anti-Phospho-RSK1/2/3 (Thr573/570/577) Polyclonal Antibody

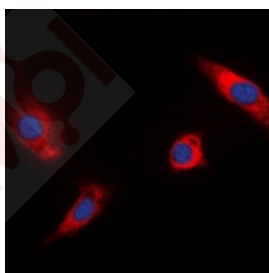
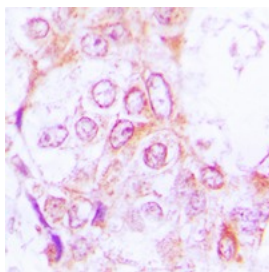
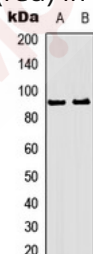
Product Details

Ig Type:	IgG
Reactivity:	Human,Mouse,Rat
Conjugation:	Unconjugated
Molecular Weight:	Theoretical: 90 kDa.
Purification:	The antibody was purified by immunogen affinity chromatography.

Applications

Verified Activity:

1. Western blot analysis of RSK1/2/3 (phospho-Thr573/570/577) expression in HeLa, HepG2 whole cell lysates.
2. Immunohistochemical analysis of RSK1/2/3 (phospho-Thr573/570/577) staining in human lung cancer formalin fixed paraffin embedded tissue section. The section was then incubated with the antibody at room temperature and detected using an HRP conjugated compact polymer system. DAB was used as the chromogen. The section was then counterstained with haematoxylin and mounted with DPX.
3. Immunofluorescent analysis of RSK1/2/3 (phospho-Thr573/570/577) staining in HeLa cells. Formalin-fixed cells were permeabilized with 0.1% Triton X-100 in TBS for 5-10 minutes and blocked with 3% BSA-PBS for 30 minutes at room temperature. Cells were probed with the primary antibody in 3% BSA-PBS and incubated overnight at 4 C in a humidified chamber. Cells were washed with PBST and incubated with a DyLight 594-conjugated secondary antibody (red) in PBS at room temperature in the dark. DAPI was used to stain the cell nuclei (blue).



A DRUG SCREENING EXPERT

Application: IF,IHC,WB
Recommended WB: 1:500-1000; IHC: 1:50-100; IF:1:100-300

Properties

Stability & Storage: Store at -20°C or -80°C for 12 months. Avoid repeated freeze-thaw cycles.
Shipping: Shipping with blue ice.

Antigen Details

Immunogen: KLH conjugated synthetic peptide: encompassing a sequence within the C-term region of human RSK1/2/3
Antigen Species: Human
Uniprot ID: Q15418 & P51812 & Q15349
Synonyms: HU 1;Ribosomal protein S6 kinase alpha 1;p-RPS6KA1 (T573/570/577);90 kDa ribosomal protein S6 kinase 1;MGC79981;Phospho-RPS6KA1 (T573/570/577);p90S6K;MAP kinase activated protein kinase 1a;Ribosomal S6 kinase 1;RSK 1 p90;ribosomal protein S6 kinase; Ribosomal protein S6 kinase polypeptide 1;pp90RSK1;MAPKAP kinase 1a;90kD;RPS6K1 alpha; OTTHUMP00000004113;S6K-alpha-1;rps6ka;RSK1p90;p90RSK1;p90 RSK1;RSK 1;RPS6KA1 (p-Thr573/570/577);HU1;MAPKAPK1A;KS6A1_HUMAN;polypeptide 1;RPS6KA1 (p-T573/570/577); MAPKAPK-1a;RSK1;Ribosomal protein S6 kinase 90kD polypeptide 1;dJ590P13.1;Mitogen-activated protein kinase-activated protein kinase 1A;EC 2.7.11.1;RSK;S6K alpha 1;p-RPS6KA1 (Thr573/570/577)

Inhibitor · Natural Compounds · Compound Libraries · Recombinant Proteins

This product is for Research Use Only · Not for Human or Veterinary or Therapeutic Use

Tel:781-999-4286 E_mail:info@targetmol.com Address:34 Washington Street,Wellesley Hills,MA 02481